

# Profile of a PA



**31%**  
MALE



## NUMBER OF PATIENTS PAs SEE

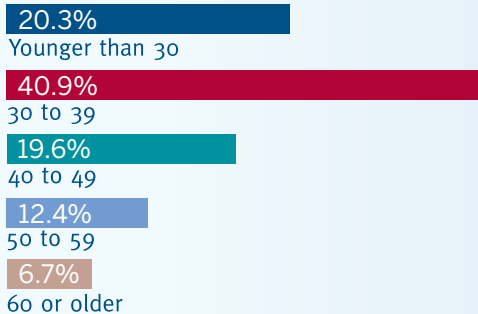
**16** per day  
&  
**60** per week

Numbers vary by setting and specialty.



## MEDIAN AGE: 36

### Age Ranges



Numbers may not add up to 100 due to rounding.

## TOP SPECIALTIES

Primary Care	24.4%
Surgical Subspecialties	26.3%
Emergency Medicine	10.5%
Internal Medicine Subspecialties	10.8%

Primary care includes family medicine/general practice, general internal medicine and general pediatrics.

## COMPENSATION

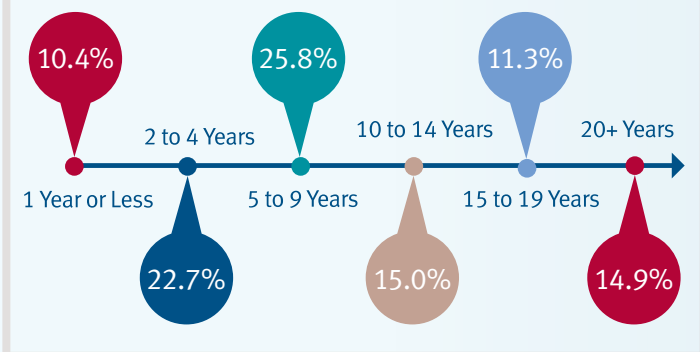
Median Salary	\$97,000
Median Bonus	\$5,000
Receive Bonus	48.7%



Compensation reflects clinically practicing PAs who work 32 hours or more a week.

## YEARS AS A PA

Median: 7



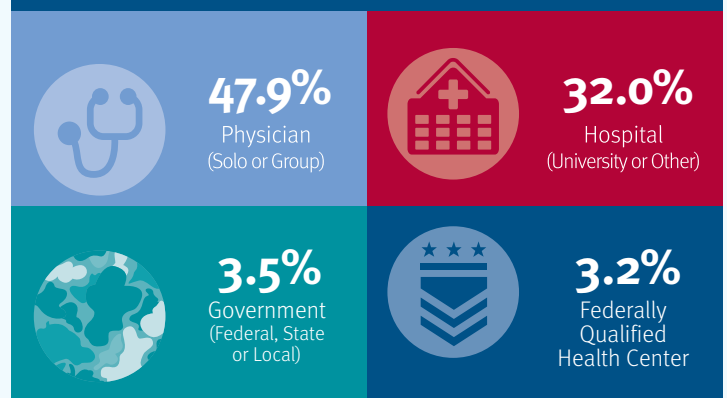
## SATISFACTION

PAs are satisfied with their career choice.

PAs who would choose their career over again.

**81.5%**

## PRIMARY EMPLOYER



An additional 13.4% of PAs work for another employer type.