



Thunderclap Headache

Katie Guillen PA-C
Mayo Clinic Arizona Department
of Neurology



Disclosures

- Non-Declaration Statement: I have no relevant relationships with ineligible companies to disclose within the past 24 months. (Note: Ineligible companies are defined as those whose primary business is producing, marketing, selling, re-selling, or distributing healthcare products used by or on patients.)



Objectives

- Define Thunderclap Headache (TCH)
- Discuss headache red flags and SNOOP criteria to understand when emergent evaluation is needed
- Discuss clinical presentation and diagnostic evaluation of TCH including pertinent imaging, labs, and procedures
- Review most common causes of TCH, as well as treatment
- Apply the information presented in a clinical case



What is a Thunderclap Headache?

A **sudden onset**, severe headache that begins and reaches maximal intensity within **1 minute**





SNOOP Criteria

S - Systemic signs or symptoms of disease (fever, chills, myalgias)

N - Neurologic deficits

O - Sudden onset

O - Onset after the age of 40

P - Pattern, any change in headache pattern



Clinical Presentation

- **Severe, rapid onset headache**, reaching maximal intensity within **60 seconds**
- Sentinel Headache
- Altered level of consciousness
- Vision changes
- Neurologic deficits
- Seizures
- Neck or back pain



Diagnostic Evaluation

- **CT Head w/o contrast** - always first!
 - Evaluate for blood, intracranial masses, ischemic stroke
- Lumbar puncture
 - Evaluate for subarachnoid hemorrhage
 - Bonus: infection, increased intracranial pressure, inflammation etc.

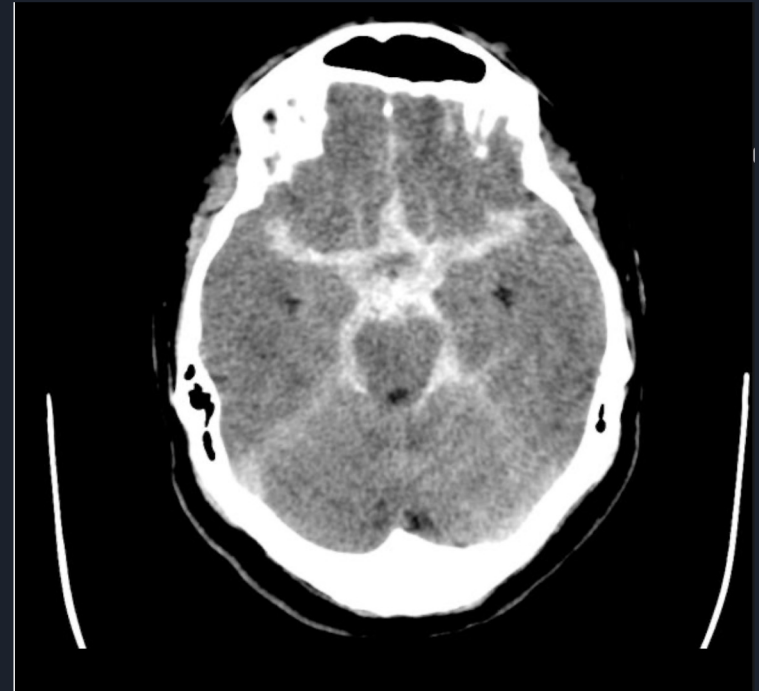


Diagnostic Evaluation

- If CT Head/LP are not diagnostic pursue
 - MR Brain w/wo contrast
 - Vessel imaging (CTA H/N or MRA H/N)
- CBC, CMP, CXR, Urinalysis, UDS, EKG

Subarachnoid Hemorrhage

- **Most common cause of TCH**
- Acute bleeding into subarachnoid space
- **Most commonly from intracranial aneurysm rupture**
- Clinical presentation:
 - TCH, ALOC, +/- sentinel headache



Hunt and Hess Scale

Grade	Hunt and Hess Scale
1	No sx, mild HA, +/- nuchal rigidity
2	Mod - severe HA, nuchal rigidity, CN palsy
3	Mild AMS, +/- mild focal neuro deficit
4	Stupor and/or hemiparesis
5	Comatose and/or decerebrate rigidity and/or no motor response



Subarachnoid Hemorrhage

- Once SAH confirmed, urgent vascular imaging performed to look for vascular malformation
 - CTA 90-97% sensitivity in detecting intracranial aneurysm
 - **Digital subtraction angiography is the gold standard**




SAH Management

- Emergent stabilization if needed
 - Airway, breathing, circulation
 - Blood pressure management
 - EVD placement
- Monitoring in ICU/PCU
 - Secondary complications
 - Monitor for cardiac and pulmonary complications, electrolyte abnormalities



SAH Management

- Treatment
 - Endovascular intervention or open ablation
 - Timing for treatment balances risk of rebleeding/complications
 - Management of complications
 - Calcium channel blockers for cerebral vasospasm, initiation of AEDs for seizures



Reversible Cerebral Vasoconstriction Syndrome (RCVS)

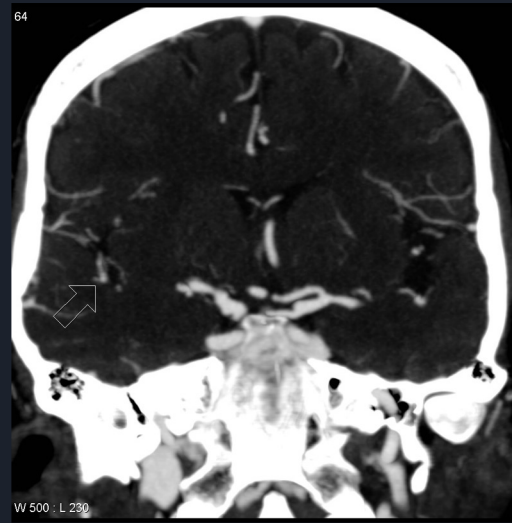
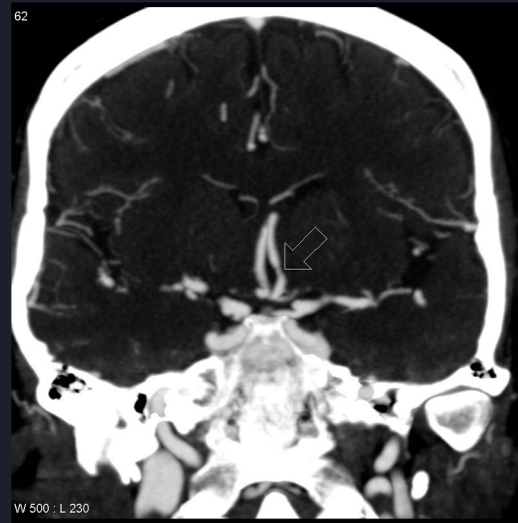
- Most common cause of TCH
- Diagnosed based on key clinical features
 - TCH or severe, recurrent headache
 - Cerebral vasoconstriction in at least 2 different arteries
 - Resolution of vasoconstriction within 3 months
 - No PACNS or aneurysmal SAH



RCVS

- Clinical Presentation:
 - TCH, nausea/vomiting, light/sound sensitivity, altered LOC, seizures, focal neuro deficits
- CTH and MR Brain are often normal
- CTA will note multifocal vasoconstriction in intracranial arteries
 - “String of Beads” appearance

RCVS on Imaging



Case courtesy of Assoc Prof Frank Gaillard, Radiopaedia.org, rID: 4533


Case courtesy of Prof Peter Mitchell, Radiopaedia.org, rID: 34462



RCVS Management

- Withdrawal of vasoactive agents, analgesia, observation
- Initiation of calcium channel blocker
 - Treatment duration varies, usually 4-8 weeks
 - Goal: resolution of vasoconstriction on imaging
- Manage secondary complications of RCVS
- Avoidance of headache triggers
- Outpatient follow up with Neurology
- RCVS is a self-limited course

Case 1



59 YOF with hx of hypertension presents to ED with complaint of headache. Patient reported she was in a meeting when she realized her **left leg couldn't move**. This coincided with **abrupt onset of 10/10 headache that reached maximum intensity within 15-30 seconds**. She reported **associated blurry vision and nausea**. No vomiting, slurred speech, aphasia, or other focal neurologic deficit.

Patient also reported headache the day prior to presentation which peaked to 7/10 within minutes of onset. It resolved after patient took Naproxen.

Case 1 Continued

Vital Signs: BP: 150/99 HR: 65 RR: 16 T: 36.5 C SpO2: 97%

General: WDWN, resting in bed, at times tearful but NAD

Mental Status: Awake, alert, oriented x3. **Disoriented to date.**

Language: Speech is slow but no dysarthria or aphasia.

CN: PERRLA. VFI. EOMI. Normal sensation V1-3. Facial strength full and symmetric.

Motor: Full strength in all extremities.

Sensation: Intact to light touch in multiple dermatomes in all 4 extremities

CT Head without contrast



Case 1 Continued

- CTA H/N: L cervical ICA with focal area of luminal expansion and irregularity
- EVD placed to manage hydrocephalus
- Cerebral angiogram performed - noted R ICA aneurysm
 - Flow Diverting Embolization performed
- Initiated on Keppra 500mg BID
- Initiated on Nimodipine 60 q4hours
- Daily TCDs to assess for vasospasm



Complete Thunderclap Headache Differential

- Subarachnoid Hemorrhage*
- RCVS*
- CVST
- Cerebral Infection
- Cervical Artery Dissection
- Complicated Sinusitis
- Hypertensive Crisis
- ICH
- Ischemic stroke
- Spontaneous Intracranial Hypotension
- Subdural Hematoma
- Aqueductal Stenosis
- Brain Tumor
- Cardiac Cephalgia
- Giant Cell Arteritis
- Pituitary Apoplexy
- Pheochromocytoma
- Retroclival Hematoma
- Spontaneous Spinal Epidural Hematoma
- Third Ventricle Colloid Cyst
- Primary or Idiopathic Thunderclap Headache
- Unruptured Intracranial Aneurysm



References:

Burton, Tina M., and Cheryl D. Bushnell. "Reversible Cerebral Vasoconstriction Syndrome." *Stroke*, vol. 50, no. 8, 2019, pp. 2253–2258., <https://doi.org/10.1161/strokeaha.119.024416>.

Cappelen-Smith, Cecilia, et al. "Reversible Cerebral Vasoconstriction Syndrome: Recognition and Treatment." *Current Treatment Options in Neurology*, vol. 19, no. 6, 29 Apr. 2017, <https://doi.org/10.1007/s11940-017-0460-7>.

Chou, Sherry Hsiang-Yi. "Subarachnoid Hemorrhage." *CONTINUUM: Lifelong Learning in Neurology*, vol. 27, no. 5, 2021, pp. 1201–1245., <https://doi.org/10.1212/con.0000000000001052>.

Do, Thien Phu, et al. "Red and Orange Flags for Secondary Headaches in Clinical Practice." *Neurology*, vol. 92, no. 3, 2018, pp. 134–144., <https://doi.org/10.1212/wnl.0000000000006697>.

Schwedt, Todd J. "Thunderclap Headache." *CONTINUUM: Lifelong Learning in Neurology*, vol. 21, no. 4, 2015, pp. 1058–1071., <https://doi.org/10.1212/con.0000000000000201>.