

Critical Thinking: Eliminating Race-based Practices in Clinical Medicine

Kara Caruthers, MSPAS, PA-C

Howard Straker, PA-C, EdD, MPH

Susan LeLacheur, DrPH, PA-C

+

•

○

No Disclosures

For Kara Caruthers, Howard Straker or Susan LeLacheur

-
- + *We will be utilizing tenets of Critical Race Theory (CRT)*
 - *CRT is a way of understanding how racism has shaped public policy, including medicine*



Objectives

- Examine how race is used in clinical algorithms, guidelines, and decision-making tools.
- Discuss how understanding race in clinical tools is important for health equity.
- Apply a 3-question test when teaching and applying clinical algorithms.


Case


- 64 yo man, with hx of HTN and hyperlipidemia presents for routine visit w/ labs
- No recent changes in overall health, consistent with taking medications (ACEI/diuretic combo and a statin)
- GFR Calculation
 - Non AA: 49 mL/min/1.73 m²
 - AA: 60 mL/min/1.73 m²
- Next steps?






How will
you
manage
this
patient?

- Adjustment of medication
 - Referral to nephrology
 - Continue regimen and monitor
- 



Which
eGFR did
you use?

- African American
 - Non-African American
- 

-
- - How will your decision affect his care?

Definitions

Race - a **social classification** of humans based upon physical characteristics

- Used as proxy for culture, socioeconomic status, environment, racism
- There is more gene variability within a race than between races
- Seldom well operationalized in scientific/medical research and clinical care

Implicit bias – subconscious differentiation based on physical characteristics

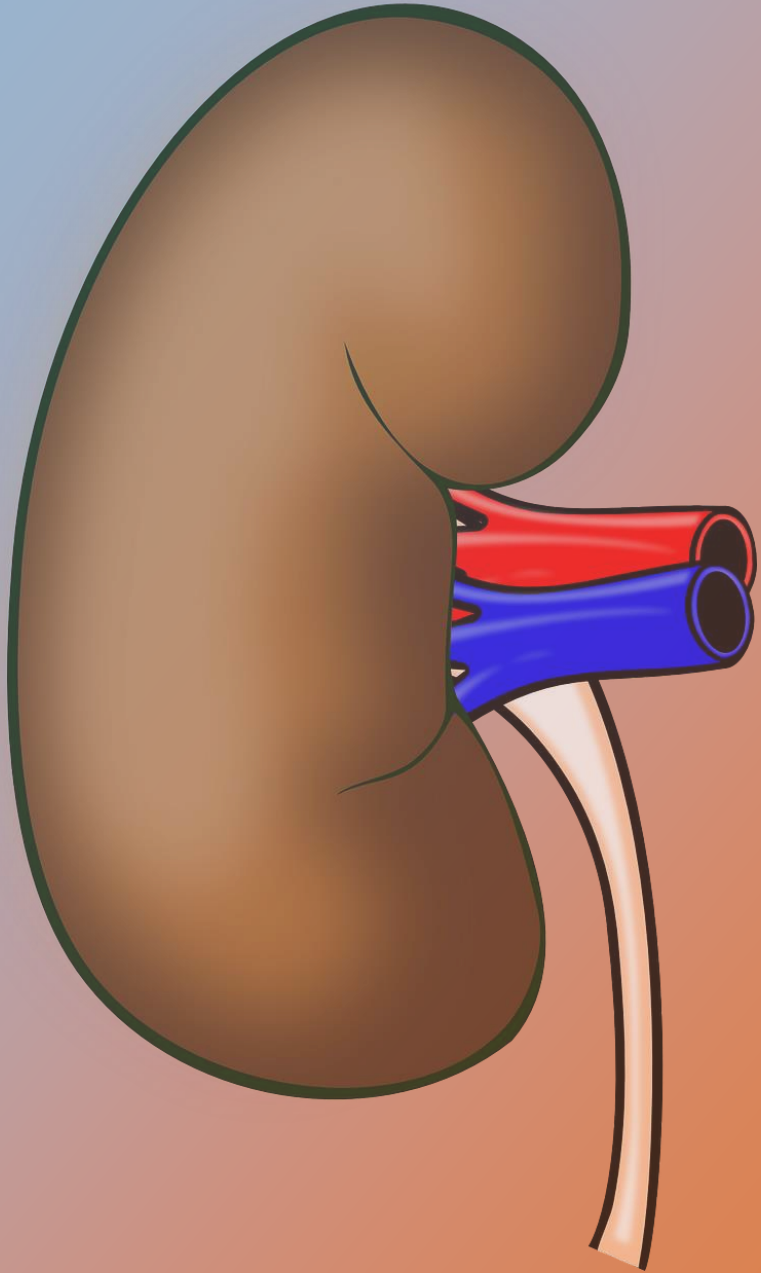
- Can lead to systematic bias and stereotyping

Algorithm – a tool used to guide clinical decisions

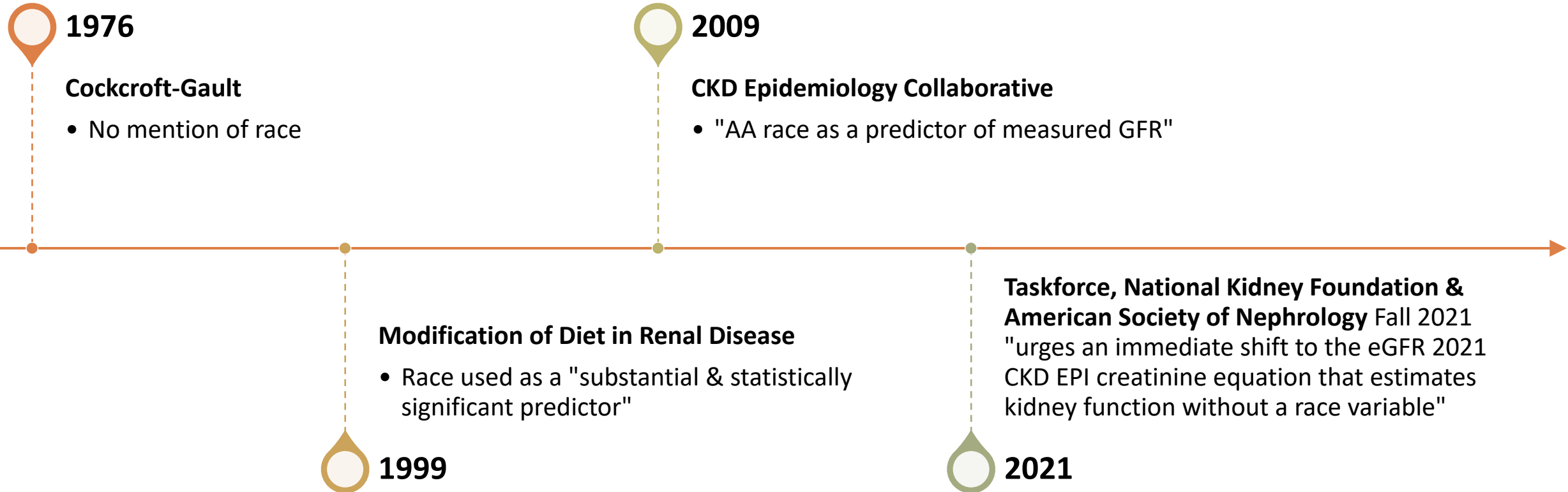
- Guidelines are types of algorithms

Race-based medicine – clinical decisions guided by patient race

- Implicitly or explicitly



Use of Race in Kidney Function Equations

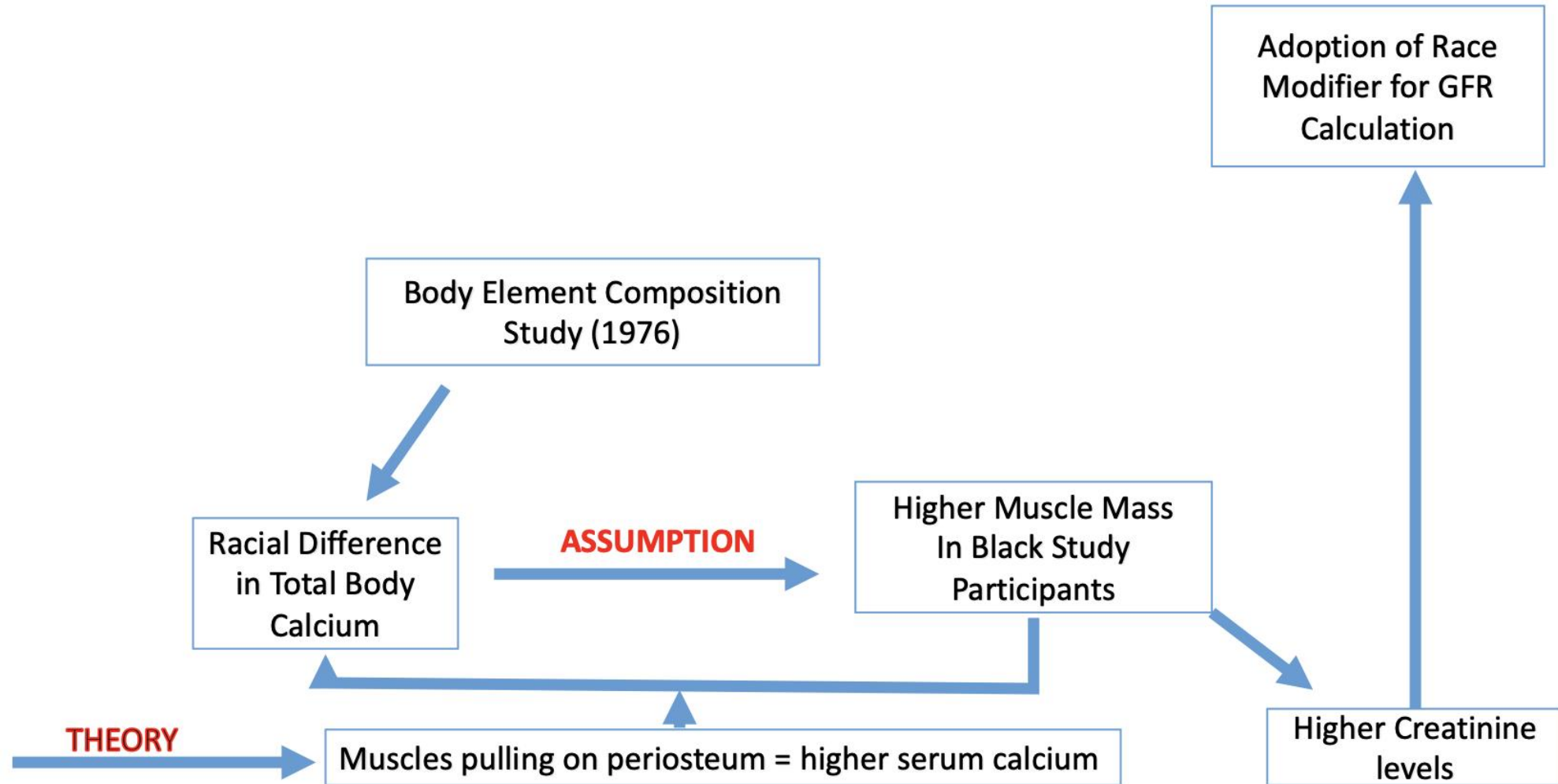




Evidence-Based Medicine?

- Body element composition study 1976
- Reference standards for determining skeletal mass were altered based on race
 - Difference in total body calcium between Black and White research participants
- Led to belief Black men and women have higher muscle mass which contributes to higher serum creatinine levels
 - Theory that increased muscle mass and the force exerted on bone influences calcium levels

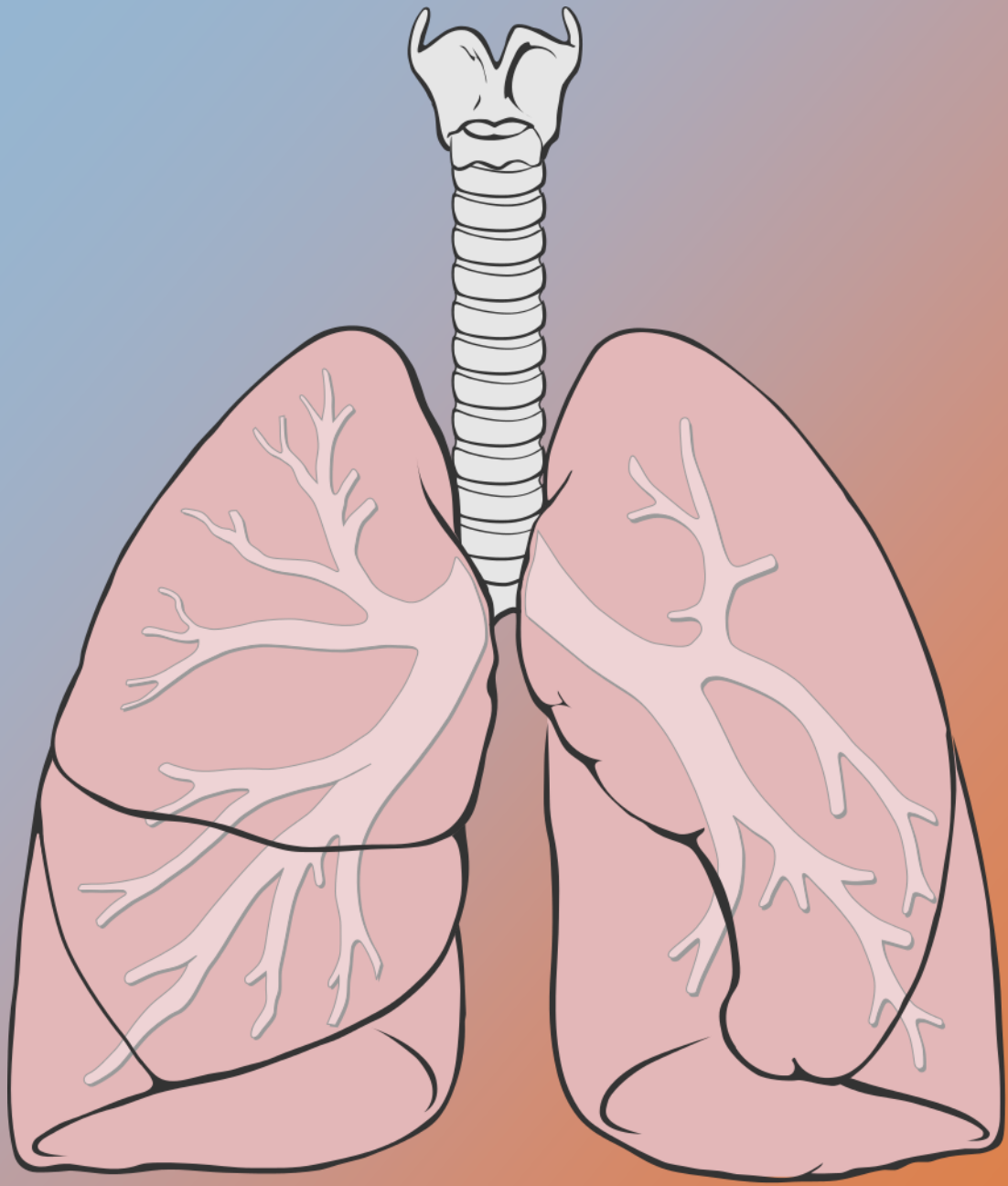
Evidence-Based Medicine?



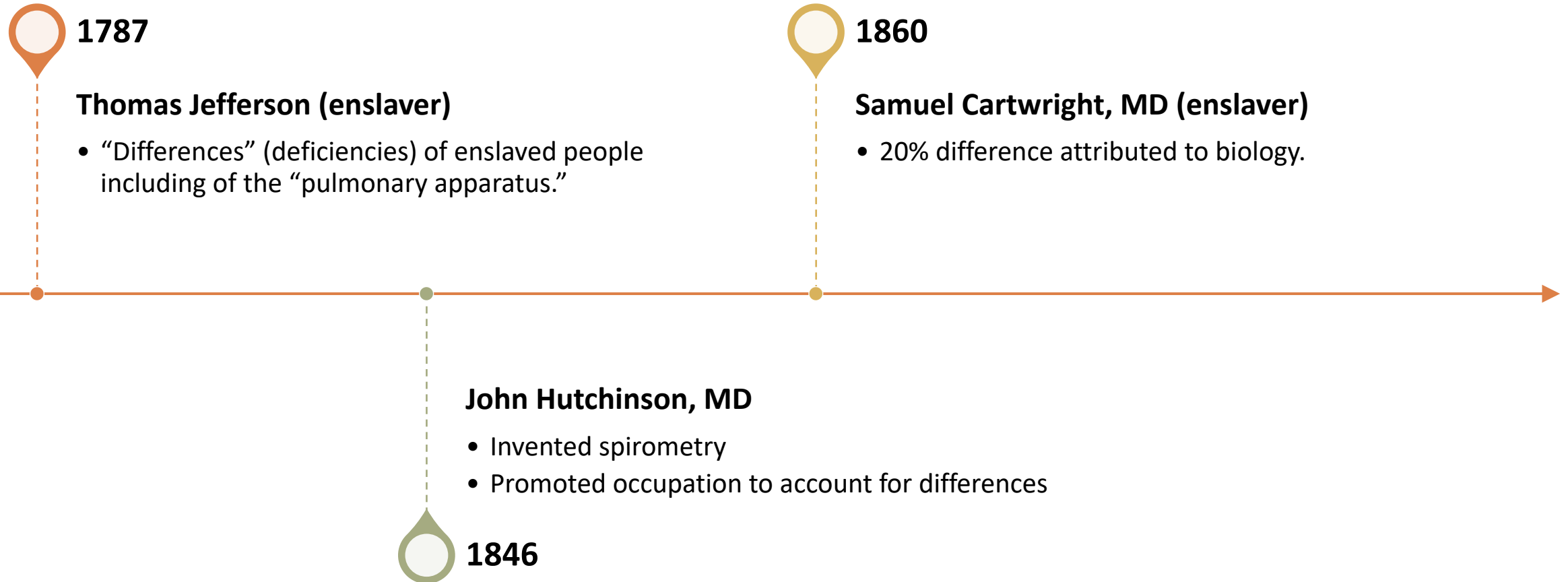
Impact of Race-Based Kidney Function Calculations



- Black race coefficient adds a median of 11 ml/min/1.73m² to a calculated eGFR that would be <60 mL/min
- Results in the possibility of a missed diagnosis of moderate CKD for 3.3 million Black Americans
 - Threshold for Stage 3 CKD
 - Level at which complications of HTN, anemia, and bone disease develops
- Black Americans less likely to receive management and treatment for Stage 3 CKD
 - Presenting symptoms are often vague and clinicians may overlook



Spirometry Correction - History



Spirometry Correction - History

+

•

○



1869

Apthorp Gould, MD

- Union Army soldiers.
- “full Blacks” lower lung function



1922

Wilson, MD & Edwards, MD

- “Colored” children with significantly lower lung volumes and excluded from the normal values calculation

Spirometry Correction - History



1925

Jay Arthur Myers, MD

- Published handbook
- Established calculations & dismissed occupation or environmental influences.

Spirometers use a race-based correction

- ***10–15% smaller lung capacity for Black patients***
- ***4–6% smaller lung capacity for Asian patients***

Spirometry Correction - Current Discussions



2000

Braun, Lujan, Kumar, Roberts and many others 2000-current

Question the validity of the “race adjustment” in PFTs.

Others argue its necessity

Meredith A. Anderson, Atul Malhotra, Amy L. Non 2/ 2021

During the COVID-19 pandemic, these race adjustments could potentially cause clinicians to miss important diagnoses, such as restrictive complications.

2021

Race-based corrections are likely biasing clinical reports of COVID-19

Reinforce assumptions about innate biological differences

Spirometry Correction – Current Discussions



2021

Alexander Moffett, MD

“The removal of race correction led to an increase in the percentage of patients with any pulmonary defect from 59.5 percent to 81.7 percent,

2022

Elmaleh-Sachs, A et al.

3, 344 participants of various races, no difference in chronic lower respiratory disease events with or without race calculation

Kaiser Family Foundation December

Removing race correction leads to finding more prevalent and severe lung disease among Black patients.

2021

Spirometry Correction – Current Guidelines

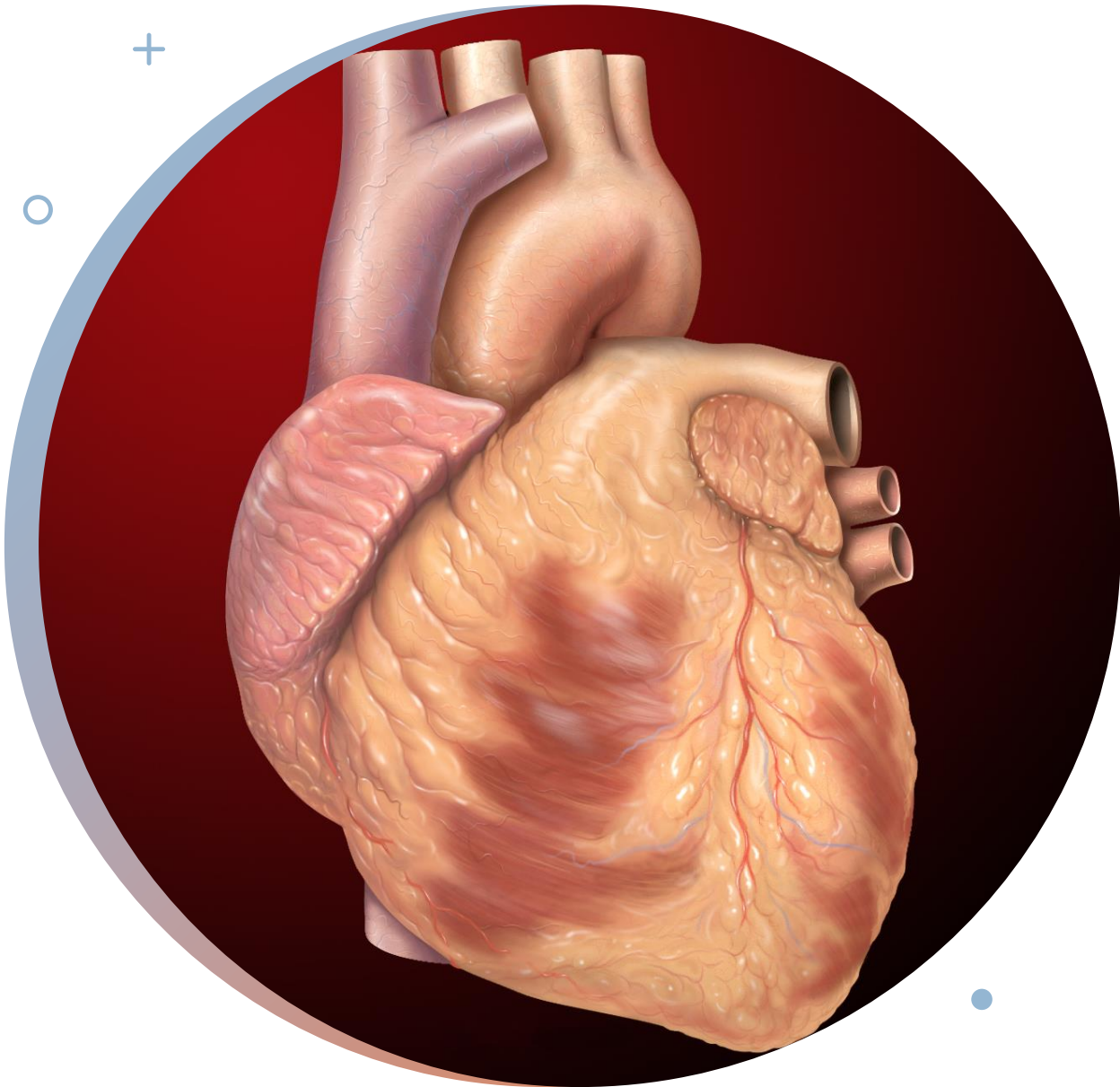


American Thoracic Society Spirometry Guidelines 2019 Update

- Guides providers to input race/ethnicity into spirometry calculators

The race correction is hardwired into EMRs, spirometers and procedures across multiple systems and institutions.

Medical reparations require not only its removal but systematic efforts to reeducate clinicians and track down and address the needs of affected patients.



"Get with the Guidelines - Heart Failure" (AHA)

- Decision making tool for in hospital therapy
 - predicts in-hospital mortality for acute heart failure patients
- Race – Black vs non-Black
 - 3 points added for non-Black

Peterson PN, et al. *Circulation Cardiovascular quality and outcomes*. 2010.

(ASCVD) Atherosclerotic Cardiovascular Disease Risk Calculation

- Estimates risk of ASCVD event over next 10 years
- Race is part of the equation to determine risk
 - Black vs White
 - Race coefficient is multiplied into the equation
- Basis:
 - Studies showing higher number of ASCVD events for Black patients than others with same burden of risk

Goff J, et al. *Journal of the American College of Cardiology*. 2014

Risk of Cardiac Surgery 2018 – Society of Thoracic Surgeons (STS)

- Calculates risk of mortality and death for common cardiac surgery
- Race/ethnicity are variables in calculations with White set as default
- Increased mortality risk scores for Blacks
 - Infers increased complications with surgery
- Increased complication risk scores for other patients of Color.

Shahian DM, et al. *The Annals of Thoracic Surgery*. 2018



Allopurinol Prescribing

- American College of Rheumatology gout guidelines recommends:
 - Genetic screening (HLA B*5801) for African American and Southeast Asians prior to initiating allopurinol
 - Against genetic screening for others
- Purpose - to avoid Allopurinol Hypersensitivity Syndrome (AHS) – severe cutaneous adverse reaction (SCAR)
 - Seen as cost effective in Asian & Black populations

FitzGerald JD, et al. *Arthritis Care & Research*. 2020

Race-based Prescribing – Allopurinol

- Highest HLA B*5801 frequency in Han Chinese and Korea (not part of Southeast Asia)
- Wide range of allele frequency across African populations
- What about mixed ancestry?



Case

- How would you treat this patient?
- Would that be determined by race?
- What race is this patient?







- +
 - - Questions to Critically Analyze Race-based Algorithms

1. Is the need for race correction based on robust evidence & statistical analysis? (consider internal & external validity, confounders, bias)

2. Is there a plausible mechanism of racial difference to justify race correction?

3. ***Will implementing this race correction relieve or exacerbate the health inequities?**

+

•

○

Call to Action



Structural Racism in Medicine (CRT)

- 1. Recognize racism**
- 2. Look for opportunities**
- 3. Work to deconstruct and reconstruct the system**
 - a) Identify personal beliefs and challenge how/why we practice
 - b) Challenge processes at practice site
 - c) Engage colleagues to shift clinical processes

+

•

○

What Has Been Done

- MedCalc acknowledgement
- Change in CHF referral and treatment at Brigham & Women's Hospital (Mass General)
- Removal of race from the American Academy of Pediatrics clinical practice guidelines for UTIs in infants and young children with fever
 - Led by pediatric residents
- American Society of Nephrology & National Kidney Foundation call for eGFR without race
 - Some systems have removed race from eGFR

+

•

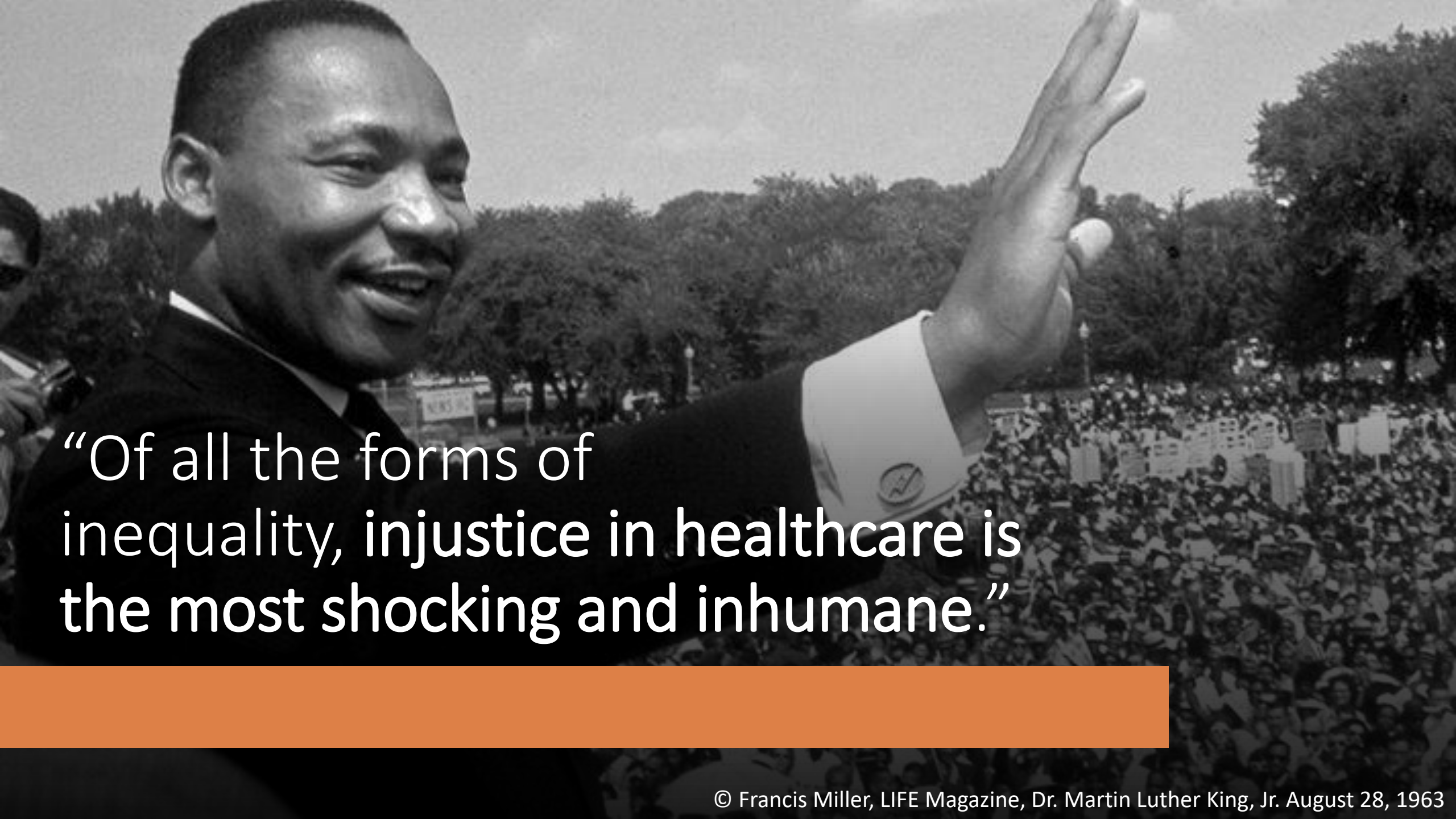
○

Late Breaking News

- American Academy of Pediatrics, Policy Statement May 2, 2022
- “The AAP will critically examine all policies and practice guidelines for the presence of race-based approaches in their development and deconstruct, desist and retire, if necessary, all policies and practice guidelines that include race assignment as a part of clinical decision-making.”

What Can We Do?

Reframe	Reframe patient presentations
Discuss	Discuss how assumption of race can be deadly with students you precept
Challenge	Challenge pain protocols
Incorporate	Incorporate the 3 questions into decision-making and in M&M discussions
Advocate	Advocate for changes in EMRs and diagnostic orders



“Of all the forms of inequality, injustice in healthcare is the most shocking and inhumane.”

Questions?

+

o

•

References

- Adams K. 4 Members of Congress Demand Research on Racism Within Clinical Algorithms. *Becker's Hospital Review*. <https://www.beckershospitalreview.com/healthcare-information-technology/4-members-of-congress-demand-research-on-racism-within-clinical-algorithms.html>. Published September 24, 2020. Accessed January 26, 2022.
- Amutah C, Greenidge K, Mante A, et al. Misrepresenting race — the role of medical schools in propagating physician bias. *N Engl J Med*. 2021;384(9):872-878. doi: 10.1056/NEJMms2025768.
- Anderson M, Malhotra A, Non A. Could routine race-adjustment of spirometers exacerbate racial disparities in COVID-19 recovery? *The Lancet*. 2020;9(2): 124-125. doi: [https://doi.org/10.1016/S2213-2600\(20\)30571-3](https://doi.org/10.1016/S2213-2600(20)30571-3)
- Borrell LN, Elhawary JR, Fuentes-Afflick E, et al. Race and genetic ancestry in medicine — A time for reckoning with racism. *N Engl J Med*. 2021;384(5):474-480. doi: 10.1056/NEJMms2029562.
- Braun L. Race, ethnicity, and lung function: A brief history. *Can J Respir Ther*. 2015;51(4):99-101.
- Braun L. Race Correction and Spirometry: Why History Matters. *Chest*. 2021;159(4):1670-1675. doi: 10.1016/j.chest.2020.10.046
- Cerdeña JP, Plaisime MV, Tsai J. Race-conscious medicine: a response to critique. *Intern Med J*. 2021;51(8):1369-1370. doi:10.1111/imj.15460
- Cerdeña J, Plaisime M, Tsai J. From race-based to race-conscious medicine: how anti-racist uprisings call us to act. *The Lancet Journal*. 2020; 396:1125-28. doi: [https://doi.org/10.1016/S0140-6736\(20\)32076-6](https://doi.org/10.1016/S0140-6736(20)32076-6)

References

- Cohn SH, Abesamis C, Zanzi I, Aloia JF, Yasumura S, Ellis KJ. Body elemental composition: comparison between black and white adults. *Am J Physiol*. 1977;232(4):E419-E422. doi:10.1152/ajpendo.1977.232.4.E419
- Davis K. Black Young Adults: Remember This When Facing Discrimination. *Medscape*. Published November 18, 2021. https://www.medscape.com/viewarticle/963271?src=soc_tw_211121_mscpedt_news_mdscp_discrimination&faf=1
- Delgado C, Baweja M, Burrows NR, et al. Reassessing the Inclusion of Race in Diagnosing Kidney Diseases: An Interim Report from the NKF-ASN Task Force. *J Am Soc Nephrol*. 2021;32(6):1305-1317. doi:10.1681/ASN.2021010039
- Delgado C, Baweja M, Burrows NR, et al. Reassessing the Inclusion of Race in Diagnosing Kidney Diseases: An Interim Report from the NKF-ASN Task Force. *AJKD*. 2021;78(1):103-115. doi:https://doi.org/10.1053/j.ajkd.2021.03.008
- Fuentes A, Ackermann R, Arthreya S, et al. AAPA Statement on Race and Racism. *American Journal of Physical Anthropology*. 2019; 169(3): 400-402. doi: <https://doi.org/10.1002/ajpa.23882>
- Feldman HI, Briggs JP. Race and the Estimation of GFR: Getting It Right. *Am J Kidney Dis*. 2021;78(1):3-4. doi:10.1053/j.ajkd.2021.03.009
- FitzGerald JD, Dalbeth N, Mikuls T, et al. 2020 American College of Rheumatology Guideline for the Management of Gout. *Arthritis care & research* 2020;72(6):744-760. doi:10.1002/acr.24180
- Flanagan A, Frey T, Christiansen SL, AMA Manual of Style Committee. Updated Guidance on the Reporting of Race and Ethnicity in Medical and Science Journals. *JAMA*. 2021;326(7):621–627. doi:10.1001/jama.2021.13304
- Goff J, Lloyd-Jones DM, Bennett G, et al. 2013 ACC/AHA Guideline on the Assessment of Cardiovascular Risk: A Report of the American College of Cardiology/American Heart Association Task Force on Practice Guidelines. *Journal of the American College of Cardiology*. 2014;63(25):2935-2959. doi:10.1016/j.jacc.2013.11.00
- Goodman CW, Brett AS. Race and Pharmacogenomics—Personalized Medicine or Misguided Practice? *JAMA*. 2021;325(7):625–626. doi:10.1001/jama.2020.25473

References

- Greene SJ, Butler J, Fonarow GC. Contextualizing Risk Among Patients with Heart Failure. *JAMA*. 2021;326(22):2261–2262. doi:10.1001/jama.2021.20739
- Grubbs V. Precision in GFR Reporting: Let's Stop Playing the Race Card. *Clin J Am Soc Nephrol*. 2020;15(8):1201-1202. doi:10.2215/CJN.00690120
- Ioannidis JPA, Powe NR, Yancy C. Recalibrating the Use of Race in Medical Research. *JAMA*. 2021;325(7):623–624. doi:10.1001/jama.2021.0003
- Inker LA, Eneanya ND, Coresh J, et al. New creatinine- and cystatin C–Based equations to estimate GFR without race. *N Engl J Med*. 2021;385(19):1737-1749. doi: <https://doi.org/10.1056/NEJMoa2102953>.
- James PA, Oparil S, Carter BL, et al. 2014 Evidence-Based Guideline for the Management of High Blood Pressure in Adults: Report from the Panel Members Appointed to the Eighth Joint National Committee (JNC 8). *JAMA*. 2014;311(5):507–520. doi:10.1001/jama.2013.284427
- Kumar R, Seibold MA, Aldrich MC, et al. Genetic ancestry in lung-function predictions. *N Engl J Med*. 2010;363(4):321-330. <https://doi.org/10.1056/NEJMoa0907897>.
- Levey AS, Titan SM, Powe NR, Coresh J, Inker LA. Kidney Disease, Race, and GFR Estimation. *Clin J Am Soc Nephrol*. 2020;15(8):1203-1212. doi:10.2215/CJN.12791019

References

- Locklear M. Measures of kidney function delay Black patients' treatment. *Yale News*. November 22, 2021. <https://news.yale.edu/2021/11/22/measures-kidney-function-delay-black-patients-treatment>
- Lujan HL, DiCarlo SE. Science reflects history as society influences science: brief history of "race," "race correction," and the spirometer. *Adv Physiol Educ*. 2018;42(2):163-165. doi:10.1152/advan.00196.2017
- Lyas C, Zuber K, Davis J. Reevaluating race and the glomerular filtration rate calculator. *JAAPA*. 2021;34(12):59-61. doi:10.1097/01.JAA.0000800284.39341.3b
- Obermeyer Z, Powers B, Vogeli C, Mullainathan S. Dissecting racial bias in an algorithm used to manage the health populations. *Science*. 2019; 366(6464): 447-453. doi: 10.1126/science.aax2342
- Ortega VE, Kumar R. The Effect of Ancestry and Genetic Variation on Lung Function Predictions: What Is "Normal" Lung Function in Diverse Human Populations? *Current Allergy and Asthma Reports*. 2015;15(4):1-11. doi: <http://dx.doi.org/10.1007/s11882-015-0516-2>.
- Peterson PN, Rumsfeld JS, Liang L, et al. A validated risk score for in-hospital mortality in patients with heart failure from the American Heart Association get with the guidelines program. *Circulation Cardiovascular quality and outcomes*. 2010;3(1):25-32. doi:10.1161/CIRCOUTCOMES.109.854877
- Paradies Y, Truong M, Priest N. A systematic review of the extent and measurement of healthcare provider racism. *J Gen Intern Med*. 2014;29(2):364-387. doi:10.1007/s11606-013-2583-1
- Quanjer, Philip. Lung Function, race, and ethnicity: a conundrum. *European Respiratory Journal*. 2013; 41: 1249-1251. Doi: 10.1183/09031936.00053913.
- Roberts D. Abolish race correction. *The Lancet Journal: The Art of Medicine*. 2021; 397(10268): 17-18. DOI: [https://doi.org/10.1016/S0140-6736\(20\)32716-1](https://doi.org/10.1016/S0140-6736(20)32716-1)

References

- Shahian DM, Jacobs JP, Badhwar V, et al. The Society of Thoracic Surgeons 2018 Adult Cardiac Surgery Risk Models: Part 1—Background, Design Considerations, and Model Development. *The Annals of thoracic surgery*. 2018;105(5):1411-1418. doi:10.1016/j.athoracsur.2018.03.002
- Soveri I, Berg UB, Björk J, et al. Measuring GFR: a systematic review. *Am J Kidney Dis*. 2014;64(3):411-424. doi:10.1053/j.ajkd.2014.04.010
- Tsai JW, Cerdeña JP, Goedel WC, et al. Evaluating the Impact and Rationale of Race-Specific Estimations of Kidney Function: Estimations from U.S. NHANES, 2015-2018. *EClinicalMedicine*. 2021; 42:101197. Published 2021 Nov 19. doi:10.1016/j.eclinm.2021.101197
- Tong M, Artiga S. Use of Race in Clinical Diagnosis and Decision Making: Overview and Implications. *KFF*. December 9, 2021. <https://www.kff.org/report-section/use-of-race-in-clinical-diagnosis-and-decision-making-overview-and-implications-issue-brief>
- Tsai J, Ucik L, Baldwin N, Hasslinger C, George P. Race Matters? Examining and Rethinking Race Portrayal in Preclinical Medical Education. *Acad Med*. 2016;91(7):916-920. doi:10.1097/ACM.0000000000001232
- Vyas DA, Eisenstein LG, Jones DS. Hidden in plain sight — reconsidering the use of race correction in clinical algorithms. *N Engl J Med*. 2020;383(9):874-882. doi: 10.1056/NEJMms2004740.
- Yudell M, Roberts D, DeSalle R, Tishkoff S. Taking race out of human genetics. *Science*. 2016;351(6273):564-565. doi: 10.1126/science.aac4951.