



Cracking the Case Wide Open

A Case-Based Approach to Extremity Fractures

Sarah Bolander, DMSc, PA-C, DFAAPA

Objectives

1. Differentiate common radiographic findings in orthopaedic injuries of the extremities.
2. Accurately describe fracture patterns.
3. Recognize fracture displacement including translation, angulation, and rotation.
4. Integrate Salter-Harris classification with pediatric fractures.
5. Differentiate features consistent with benign versus malignant bone tumors and lesions.

Disclosures

- None

Musculoskeletal Imaging

Choice of Imaging:

- Clinical presentation: history, MOI, location of pain
- DDX
- Availability of imaging modalities

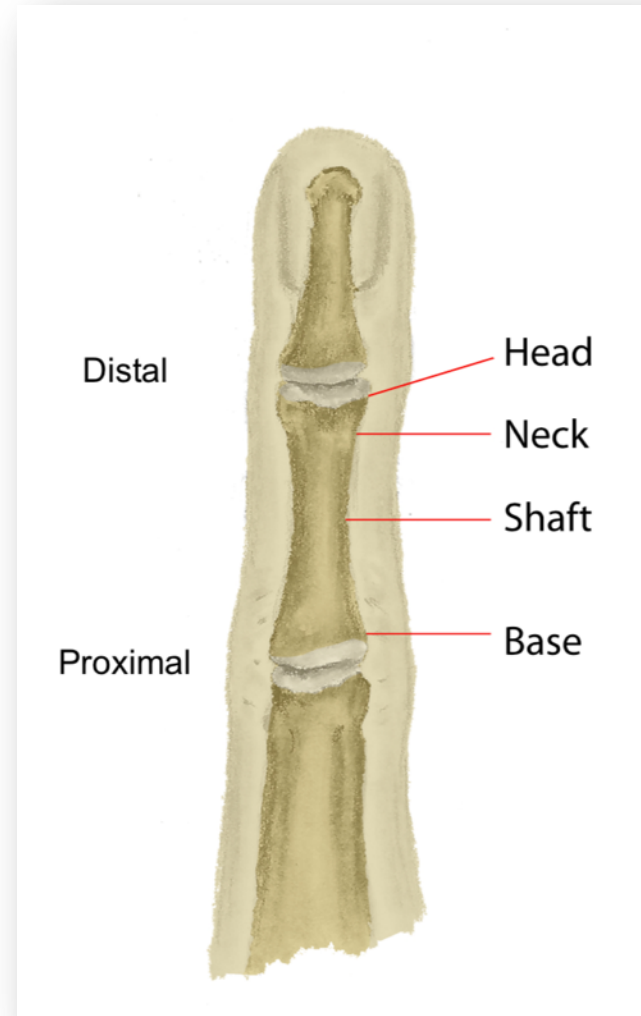
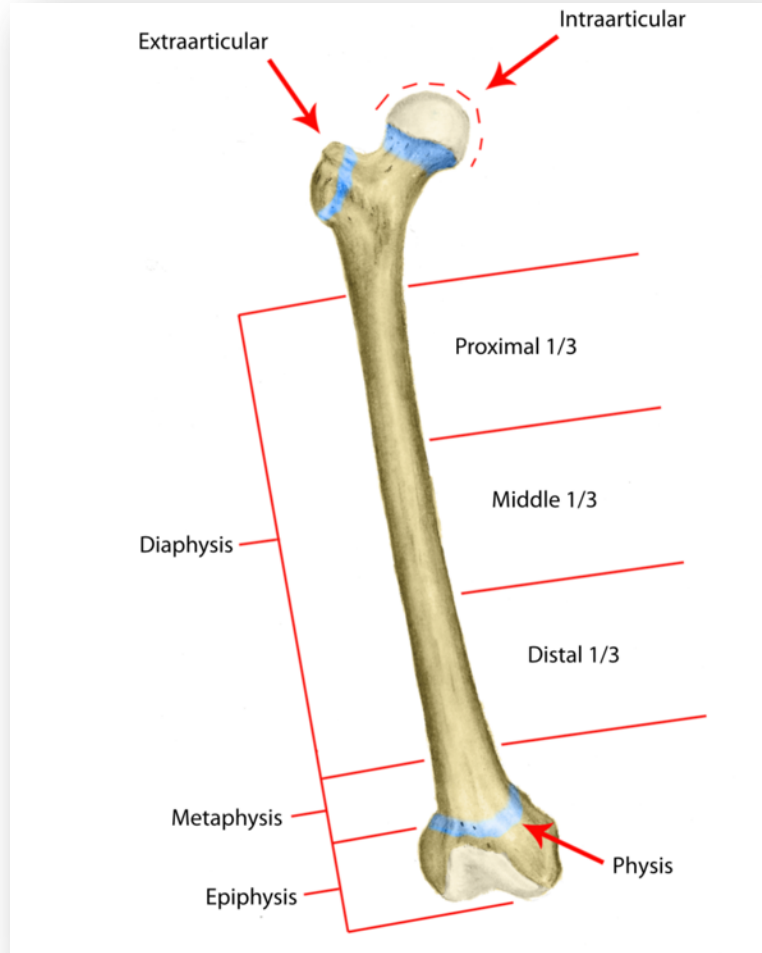
Guidelines for Imaging:

[ACR Appropriateness Criteria](#)

- Plain radiographs is the initial **imaging of choice** for most MSK conditions

Location

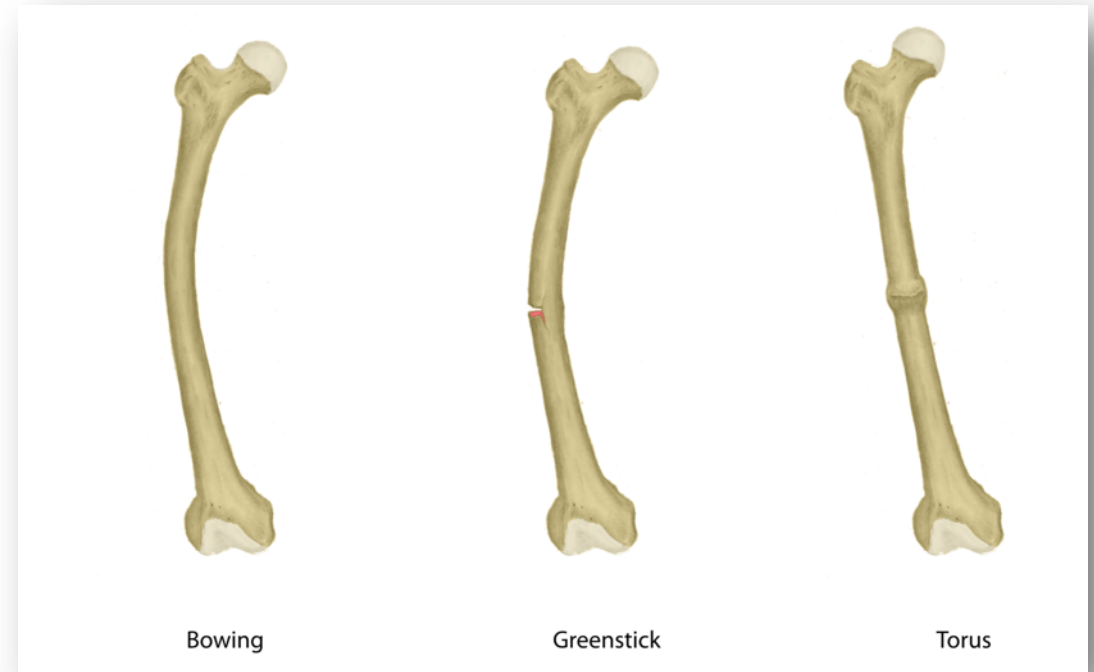
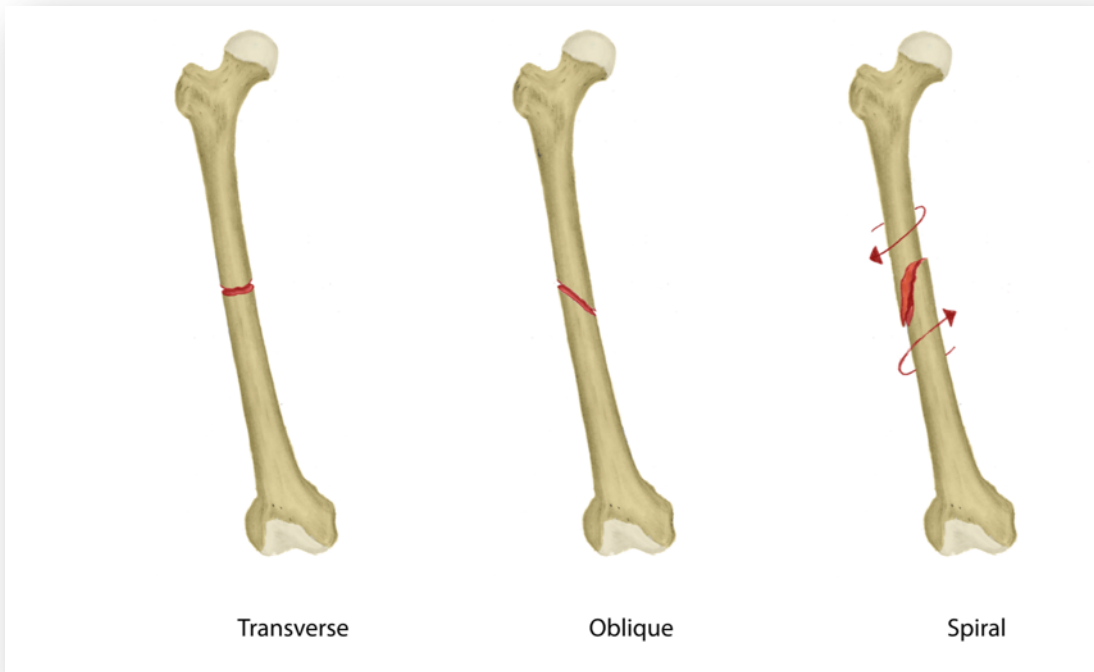
Which bone?
Where in the bone?
Joint involvement?



Illustrations by Sandra Ehrler.
Reproduced with Permission.

Type Severity and Pattern

Complete vs Incomplete?
Simple vs Comminuted?



Complete: transverse, oblique, spiral

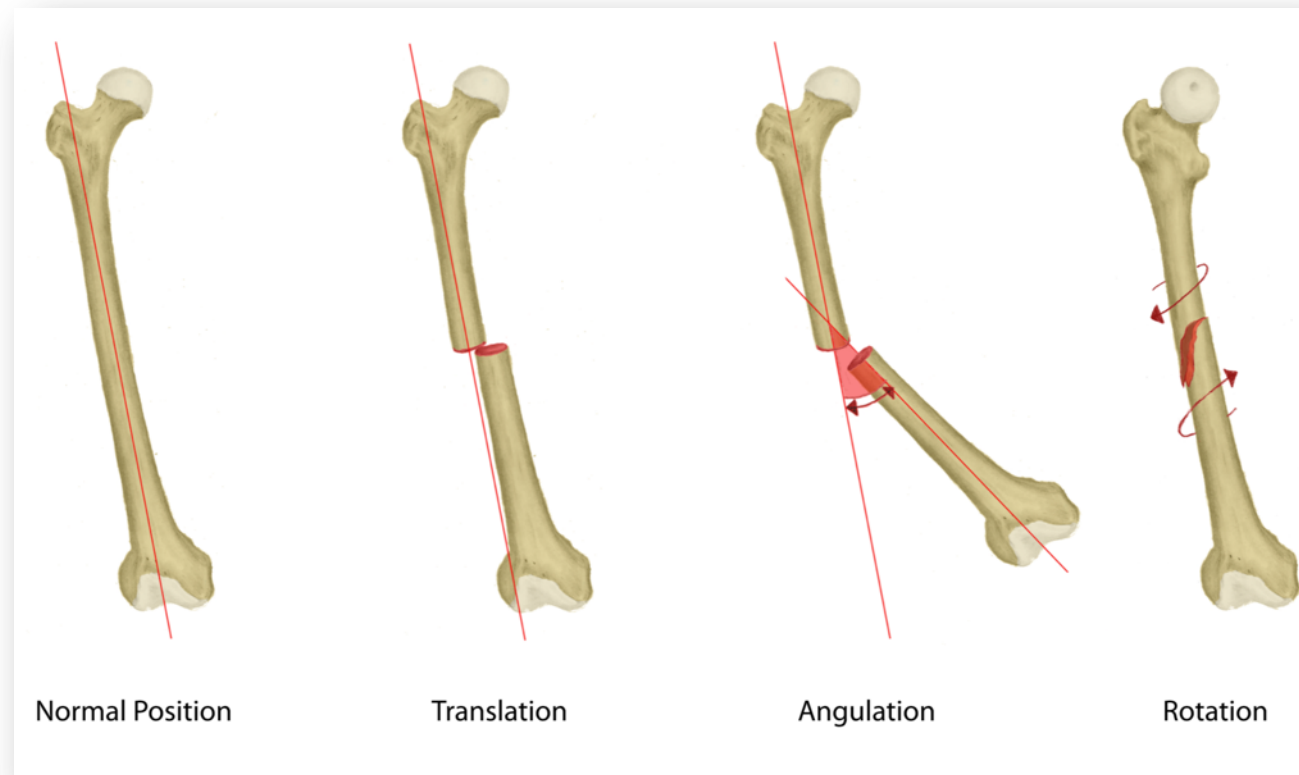
Incomplete: greenstick, torus, bowing

Unique pattern considerations: compression, impaction, avulsion, stress

Illustrations by Sandra Ehrler.
Reproduced with Permission.⁶

Position

Non-Displaced vs Displaced?
Translation, Angulation, or Rotation?



Translation: Described by % of Width or Measurement

Angulation: Measured in Degrees

Length: Shortening, Distraction, or Impaction

*Description of position is based on distal fragment placement.

Additional Considerations

Open Fracture, Physeal Involvement, Pathologic,
Associated Injuries

Image #1

Case courtesy of Dr Jeremy Jones, Radiopaedia.org, rID: 6387

Location and Site:

Type:

Pattern:

Position:

Complications:

Complete Description:



Image #2

Case courtesy of Dr Ahmed Abdrabou, Radiopaedia.org, rID: 2889725704

Location and Site:

Type:

Pattern:

Position:

Complications:

Complete Description:



Image #3

Case courtesy of Dr Andrew Dixon, Radiopaedia.org, rID: 25704



Location and Site:

Type:

Pattern:

Position:

Complications:

Complete Description:

Horizontal Beam

L

Image #4

Case courtesy of Dr Alexandra Stanislavsky, Radiopaedia.org, rID: 10961



Location and Site:

Type:

Pattern:

Position:

Complications:

Complete Description:

Image #5

Case courtesy of Dr Sajoscha Sorrentino, Radiopaedia.org, rID: 16164



Location and Site:

Type:

Pattern:

Position:

Complications:

Complete Description:

Image #6

Case courtesy of Dr Henry Knipe, Radiopaedia.org, rID: 27643

Location and Site:

Type:

Pattern:

Position:

Complications:

Complete Description:



5



Image #7

Case courtesy of Dr Tom O'Grady, Radiopaedia.org, rID: 41772

Location and Site:

Type:

Pattern:

Position:

Complications:

Location and Site:

Type:

Pattern:

Position:

Complications:

Complete Description:



Image #8

Case courtesy of Assoc Prof Frank Gaillard, Radiopaedia.org, rID: 8012

Location and Site:

Type:

Pattern:

Position:

Complications:

Complete Description:

Image #9

Case courtesy of Dr Yair Glick, Radiopaedia.org, rID: 61659

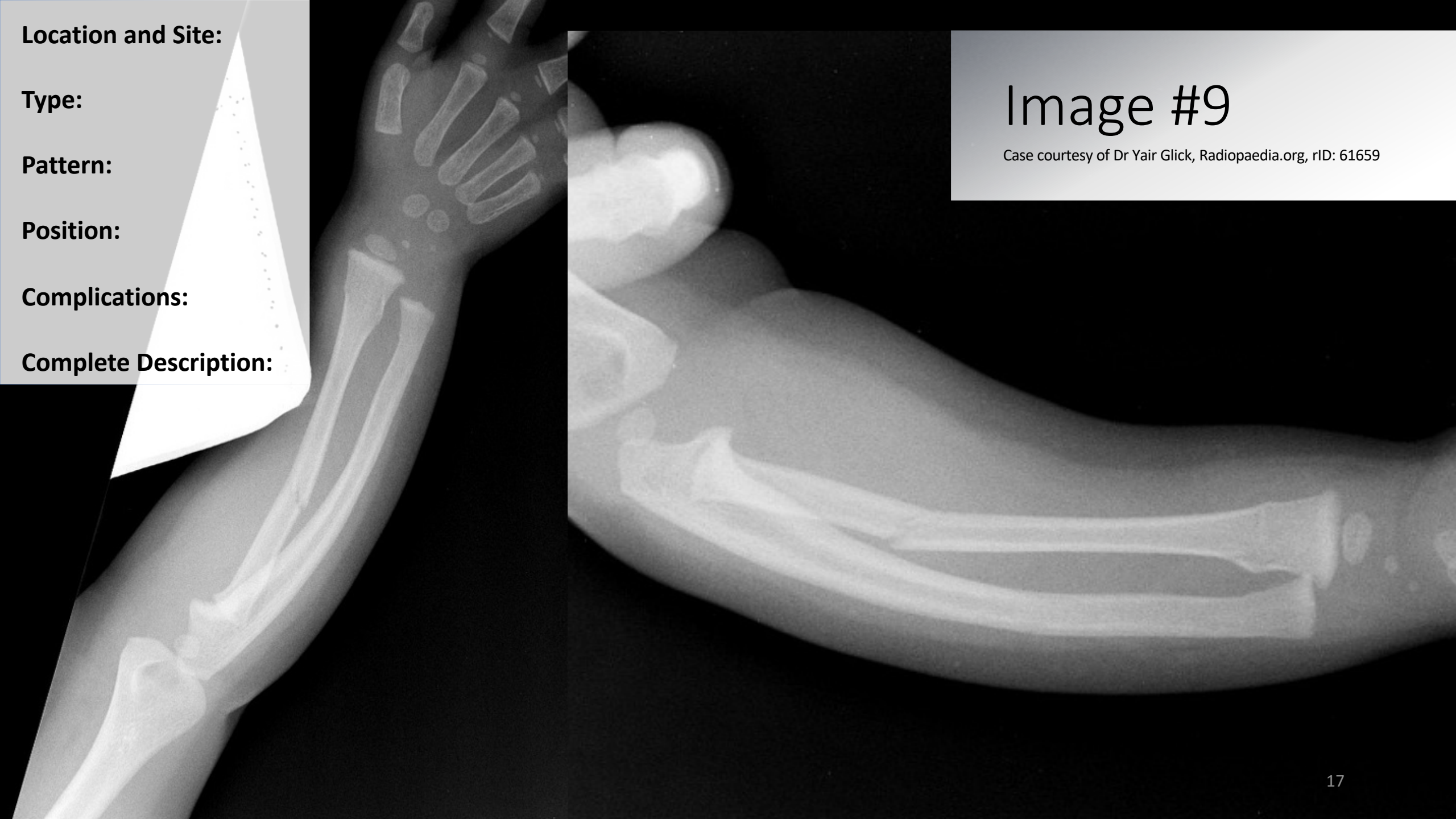


Image #10

L

Case courtesy of Dr Stefan Lazic, Radiopaedia.org, rID: 51225

Location and Site:

Type:

Pattern:

Position:

Complications:

Complete Description:



Location and Site:

Type:

Pattern:

Position:

Complications:

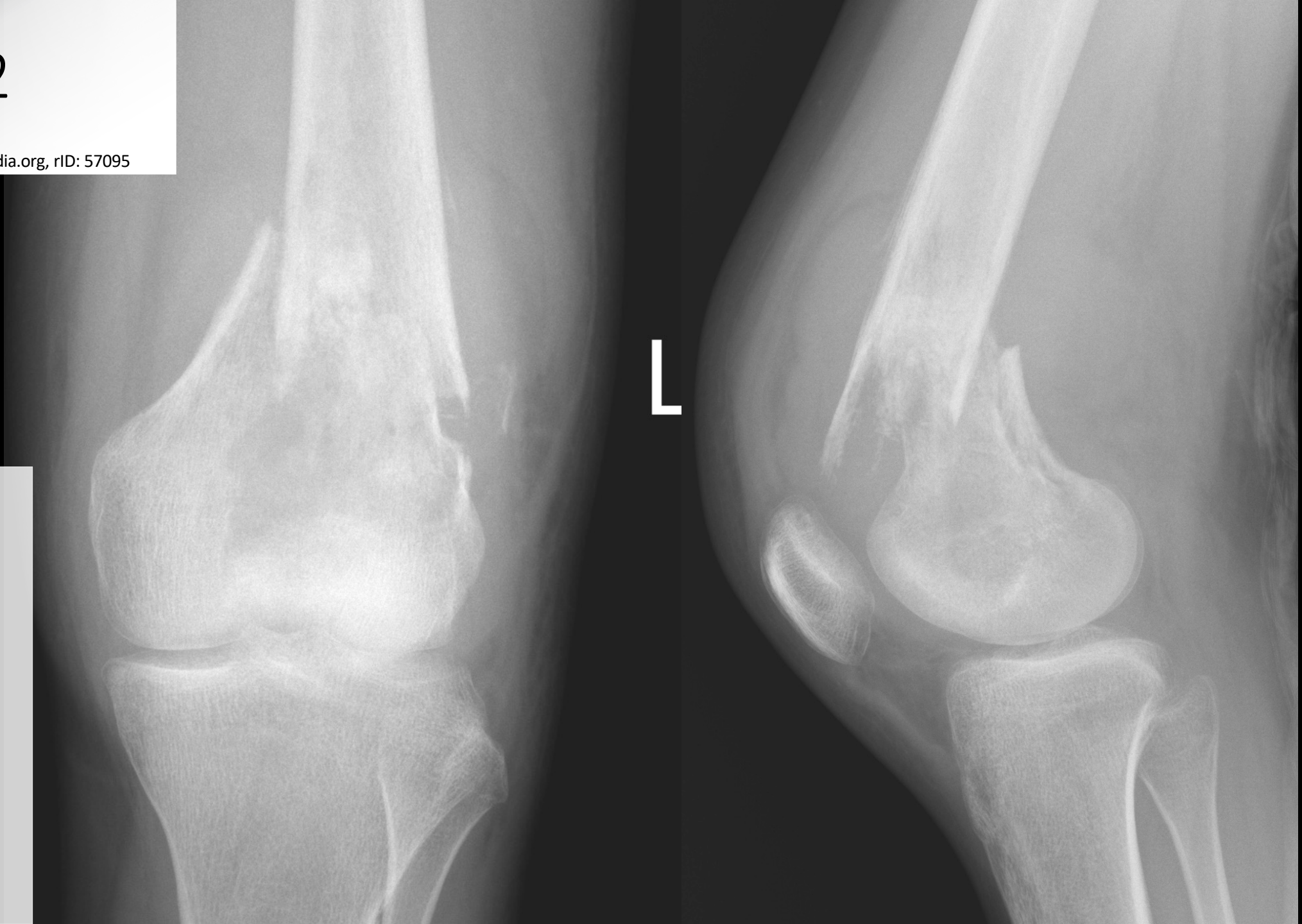
Complete Description:



Image #11

Image #12

Case courtesy of Dr Vincent Tatco, Radiopaedia.org, rID: 57095



Location and Site:

Type:

Pattern:

Position:

Complications:

Complete Description:

Summary

Be systematic



Verify your patient

Obtain quality films

- Multiple views
- Joint visualization

Identity fractures

- Compare to unaffected side if needed

Describe fractures accurately

- Location
- Type/Severity
- Pattern
- Position
- Complications

***Correlate Findings with Clinical Exam**

Thank You

Contact Information:

Sarah Bolander, DMSc, PA-C, DFAAPA

623-572-3611

sbolan@midwestern.edu

Resources for Images and Figures*

- Radiopaedia. <http://radiopaedia.org/>. Accessed April 8th, 2021.
- Sandra Ehrler, MWU PA student, provided original artwork for May 2019 JAAPA article. Illustrations were reproduced for this presentation with permission from JAAPA and illustrator.
- AO Foundation. <https://www2.aofoundation.org>. Accessed April 8th, 2021.
- Smithuis R. Radiological Society of the Netherlands. Radiology Assistant Educational site. <http://www.radiologyassistant.nl>. Accessed April 8th, 2021.

*Hyperlink or case number available for specific references