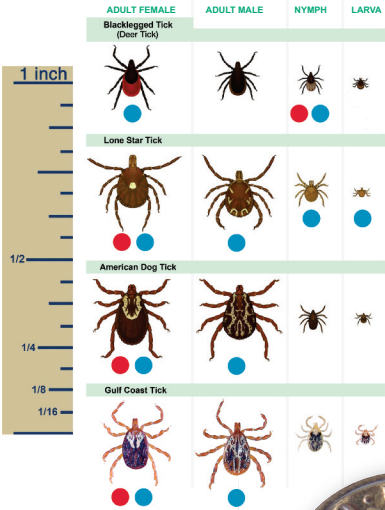


# TICK-BORNE DISEASES

## TICK IDENTIFICATION CHART



- Tick stages known to feed on people
- Tick stage causing the most disease transmission

Disclaimer: Provided for information purposes only.

**DEET**  
EDUCATION  
PROGRAM

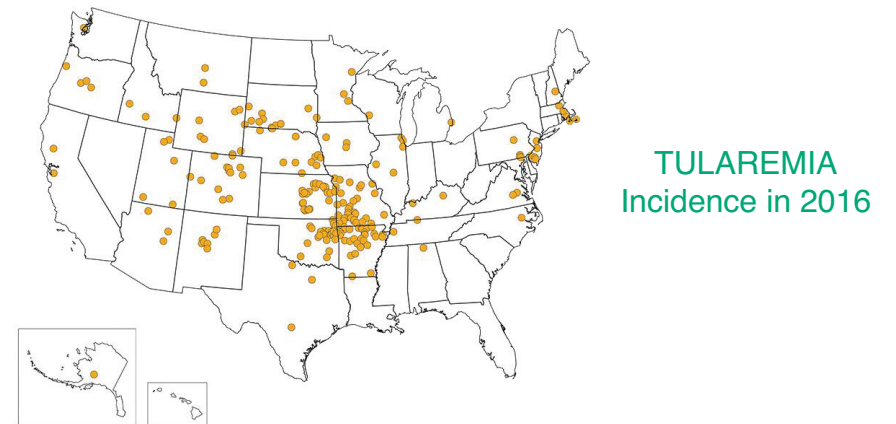
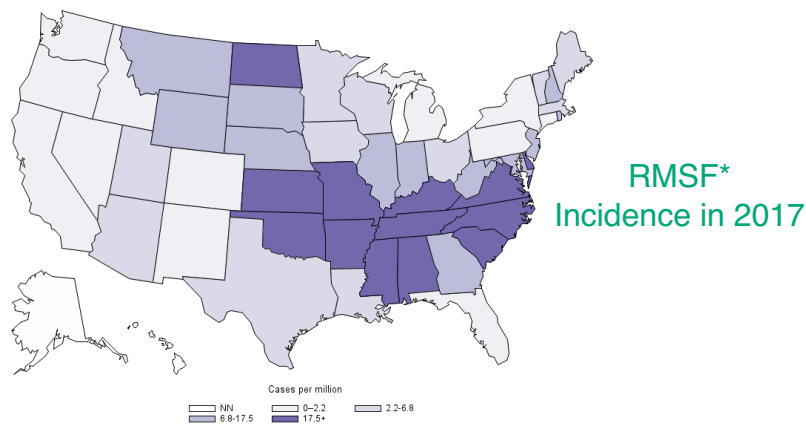
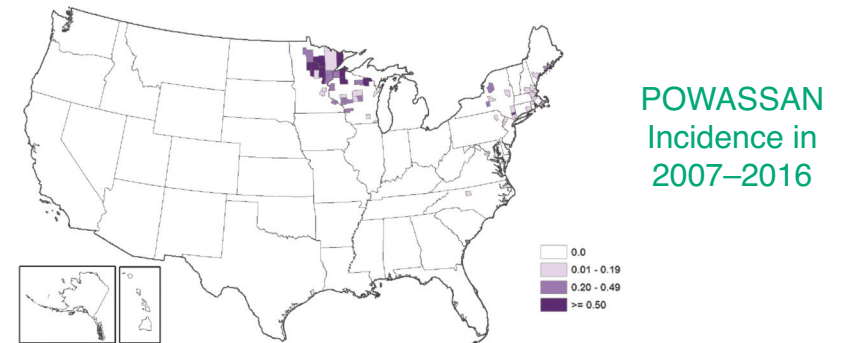
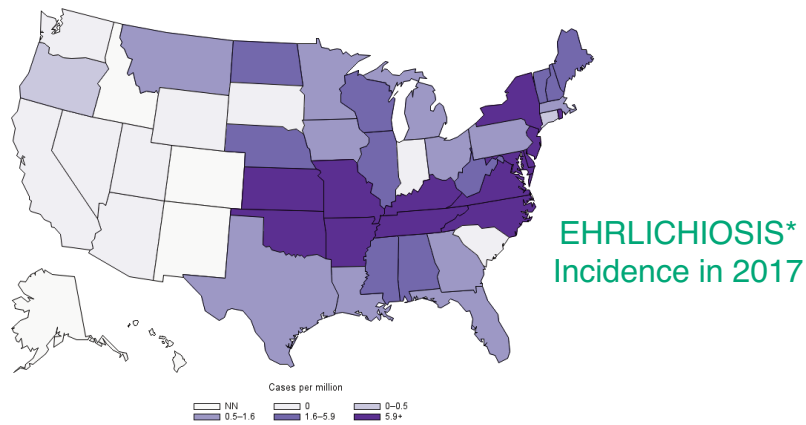
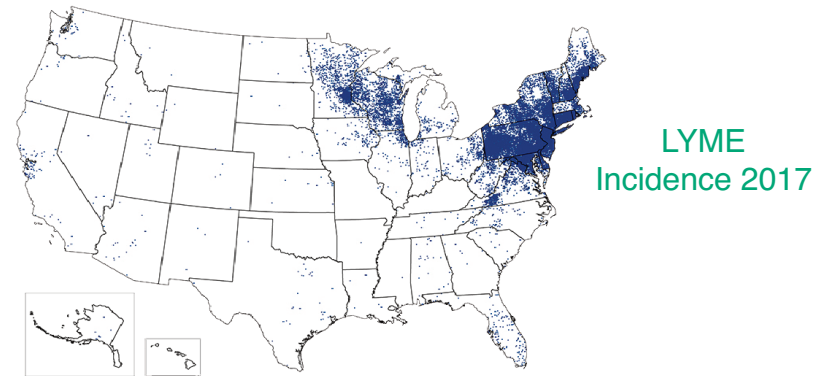
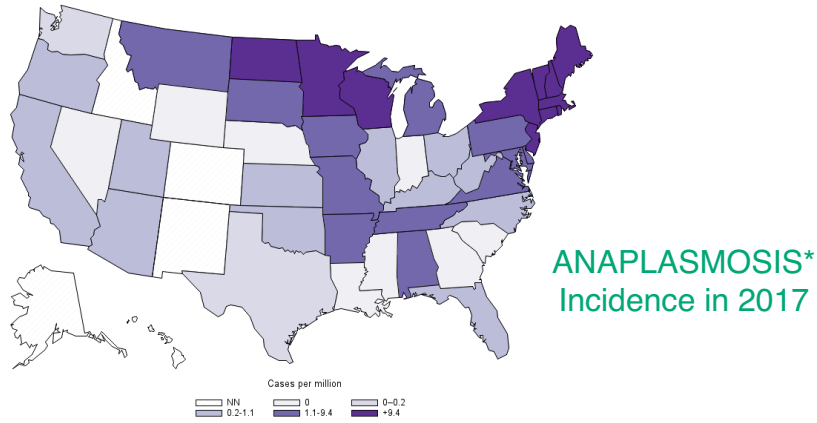
1-888-NO-BITES  
[www.deetonline.org](http://www.deetonline.org)

The DEET Education Program operates under the auspices of the Household & Commercial Products Association.

	American Dog Tick	Blacklegged Tick (Deer Tick)	Brown Dog Tick	Groundhog Tick	Gulf Coast Tick	Lone Star Tick	Pacific Coast Tick	Rocky Mountain Wood Tick	Soft Tick	Western Blacklegged Tick
Alpha-gal Meat Allergy										
Anaplasmosis										
Babesiosis										
Borrelia Miyamotoi										
Colorado Tick Fever										
Ehrlichiosis										
Heartland Virus										
Lyme Disease										
Powassan										
364D Rickettsiosis										
Rickettsiosis Parkeri										
Rocky Mountain Spotted Fever										
STARI										
Tickborne Relapsing Fever (TBRF)										
Tularemia										
Geographic Distribution	East of the Rocky Mountains Limited Areas on the Pacific Coast	Northeast and Upper Midwest	Throughout the U.S. RMSF in Southwestern U.S.	Northeastern U.S. Great Lakes Region	Atlantic Coast and the Gulf of Mexico Coastal areas of the U.S.	Southeastern and Eastern U.S. Midwest and Southern U.S.	California	Rocky Mountain States	15 states Rustic Cabins and Vacation Homes	Pacific Coast

# What Tick-Borne Diseases Should I Be Concerned About In My Area?

\*One dot placed randomly within county of residence for each confirmed case.



Maps from CDC. <http://www.cdc.gov>