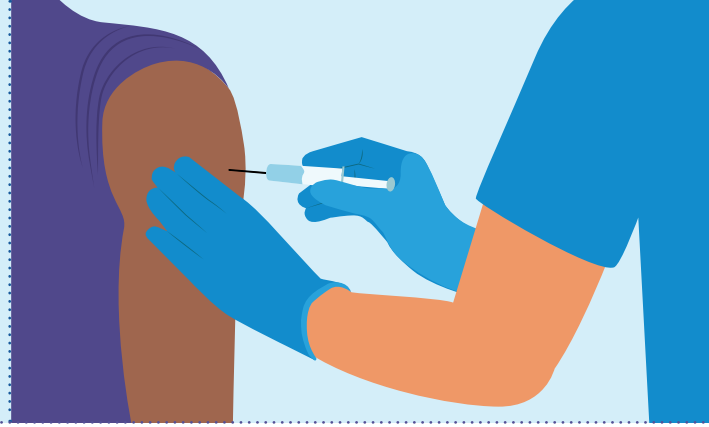


Preventing RSV: Providing OLDER PATIENTS With the Information They Need



RSV Illness Is Not Just for Kids!

97% of children have had RSV-related illness before the age of 2 years.¹

Many people are aware of RSV as a common cause of respiratory illness in children.

Adults also get RSV-related illness. In healthy adults, it is usually mild.²

Common symptoms of mild RSV illness include:



Mild fever



Runny nose



Nasal congestion



Cough



Transient wheezing

However, in older adults and adults with some chronic conditions, RSV can lead to more severe lower respiratory tract disease.²

Common symptoms of lower respiratory tract disease include:



Cough



Sputum production



Shortness of breath



Wheezing



Rapid breathing

RSV Illness Can Be Severe in Adults 65 Years of Age and Older.

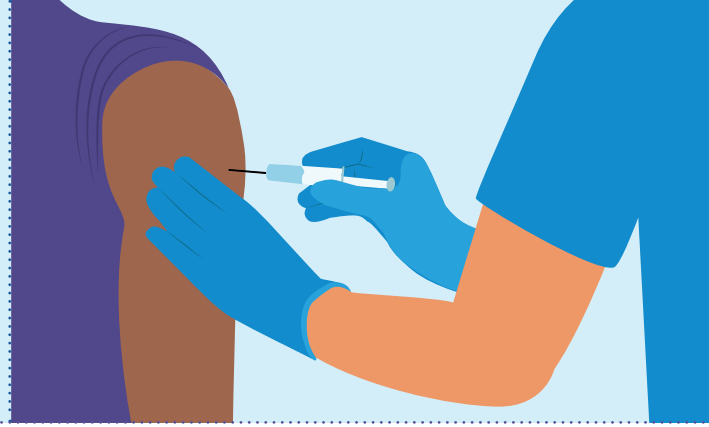
In this population in the US each year, RSV illness causes:³

≈177,000
Hospitalizations

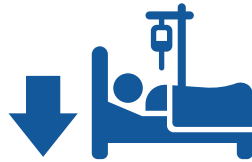
≈14,000
Deaths

Preventing RSV:

Providing OLDER PATIENTS With the Information They Need



RSV vaccination can dramatically reduce the number of deaths and hospitalizations—as well as costs—associated with RSV illness in older adults!^{4,5}



The CDC recommends RSV vaccination for:^{6,7}

All people aged 75 and older.

People aged 60 to 74 who have conditions or factors that increase risk of severe RSV disease.

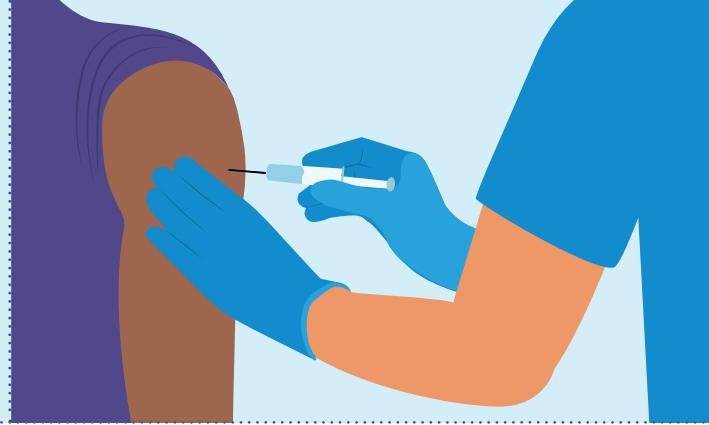
Medical Conditions That Increase Risk of Severe RSV Disease

- Lung disease
- Cardiovascular disease
- Diabetes mellitus with end-organ damage
- Severe obesity
- Neurologic or neuromuscular conditions
- Advanced chronic kidney disease
- Liver disorders
- Hematologic disorders
- Other medical conditions that increase risk of severe disease due to respiratory infections

Other Factors That Increase Risk of Severe RSV Disease

- Residence in a nursing home or other long-term care facility
- Frailty
- Other factors that increase risk of severe disease due to respiratory infection

Preventing RSV: Providing OLDER PATIENTS With the Information They Need



Additional CDC Vaccination Resources

- Adult Immunization Schedule by Medical Condition: <https://www.cdc.gov/vaccines/schedules/hcp/imz/adult-conditions.html>
- Adult vaccination assessment tool: <https://www2.cdc.gov/nip/adultimmsched/>
- Adult vaccination page: <https://www.cdc.gov/vaccines/adults/index.html>

References

1. Glezen WP, et al. *Am J Dis Child*. 1986;140(6):543-546.
2. Kenmoe S, Nair H. *Curr Opin Infect Dis*. 2024;37:129-136.
3. Havers F. Presented at the Advisory Committee on Immunization Practices meeting on June 23, 2022. <https://www.cdc.gov/vaccines/acip/meetings/downloads/slides-2022-06-22-23/04-RSV-Havers-508.pdf>.
4. Herring WL, et al. *Vaccine*. 2022;40:483-493.
5. Van Effelterre T, et al. *Clin Infect Dis*. 2023;77(3):480-489.
6. CDC. <https://www.cdc.gov/media/releases/2024/s-0626-vaccination-adults.html>
7. Melgar M, Britton A. Presented at the Advisory Committee on Immunization Practices meeting on June 26, 2024. <https://www.cdc.gov/vaccines/acip/meetings/downloads/slides-2024-06-26-28/12-RSV-Adult-Melgar-508.pdf>