

**All of Us Research Hub**  
Presented to AAPA  
January 31, 2023

Ashley Green, MLIS  
Sr. Research Projects Coordinator  
[ashley.green@all-of-us.org](mailto:ashley.green@all-of-us.org)



1

---

---

---

---

---

---

---

---

**Objectives**

During today's presentation, we will

- Learn about different the data available
- Explore the Research Hub
- Examine the steps for registration
- See how to start a research project on the Workbench

2

---

---

---

---

---

---

---

---

**Thank you to our participants and community partners!**



3

---

---

---

---

---

---

---

---



4

---

---

---

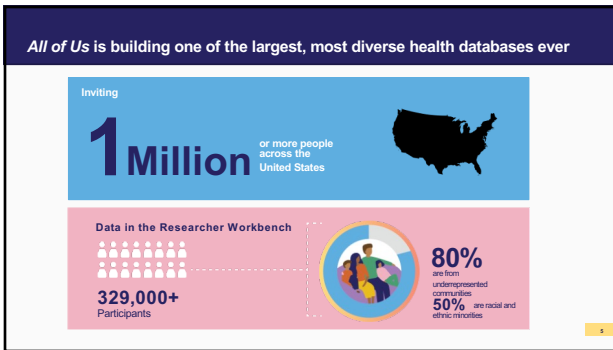
---

---

---

---

---



5

---

---

---

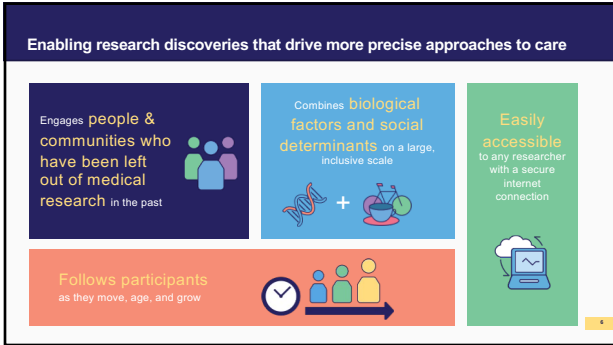
---

---

---

---

---



6

---

---

---

---

---

---

---

---

**All of Us Mission**

**Our Mission**  
Accelerate health research and medical breakthroughs, enabling individualized prevention, treatment, and care for all of us

Made possible by a team that maintains a culture built around the program's core values

---

---

---

---

---

---

---

---

---

---

7

**Participants included in All of Us research data are diverse.**

Underrepresented in Biomedical Research (UBR) Categories	Curated Data (% out of 372,380 participants)
At least one UBR	78%
Non-white race or Hispanic/Latino ethnicity	44%
Age >= 65	24%
Less than GED	9%
Annual Income <=\$25k	26%
Sexual and Gender Minorities	10%
Rural Location	7%

---

---

---

---

---

---

---

---

---

---

8

**Key takeaways for registered users**

<b>372,397</b> Survey Responses	<b>306,179</b> Physical Measurements	<b>258,415</b> Electronic Health Records (EHR)
<b>165,072</b> Genotyping Arrays	<b>98,558</b> Whole Genome Sequences	<b>12,844</b> Fitbit Records

---

---

---

---

---

---

---

---

---

---

9

**Including the first batch of genomic data**

**Genomics**  
Only available via the Controlled Tier

**98,600+ Whole Genome Sequences**

**165,000+ Genotyping Arrays**

**593,500,000+ Unique Variants**  
Represented and accessible through whole-genome data browser

**Genomics Analysis Tools**  
Free and/or open to address both clinical and research needs

**Genomic Data is Paired with Rich Phenotypic Data**

- 77,000+** Have Whole Genome Sequences + Electronic Health Records + Physical Measurements + Survey Measurements
- 95,000+** Have Whole Genome Sequences + Physical Measurements + Survey Responses
- 78,200+** Have Whole Genome Sequences + Electronic Health Records
- 3,000+** Have Whole Genome Sequences + F204 Records Representing 100% of participant EHR records

10

---

---

---

---

---

---

---

---

---

---

**Data Highlight: Social Determinants of Health (SDOH) survey**

**All of Us Social Determinants of Health**

**57,600+ initial responses**

11

---

---

---

---

---

---

---

---

---

---

**Principles of access & privacy: "Share widely and wisely."**

**Broad and Open Access**

**Commitment to Protecting Privacy**

**"make my data useful"**  
A data resource for all of us  
Remove unnecessary barriers to access

**"keep my data safe"**  
Privacy first, privacy always  
Strive to build a system that participants can trust

12

---

---

---

---

---

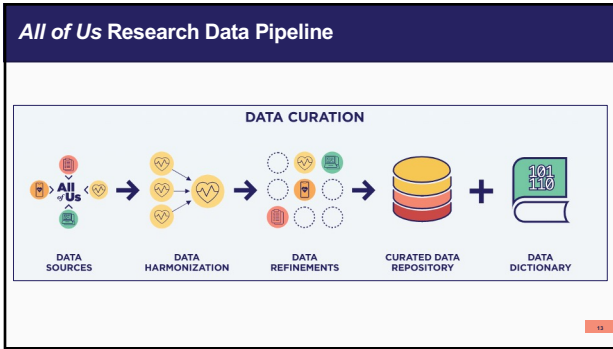
---

---

---

---

---



13

---

---

---

---

---

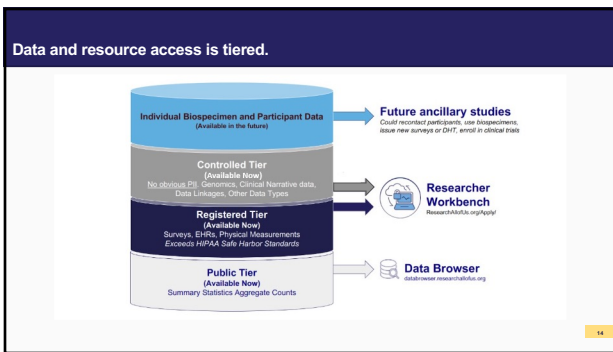
---

---

---

---

---



14

---

---

---

---

---

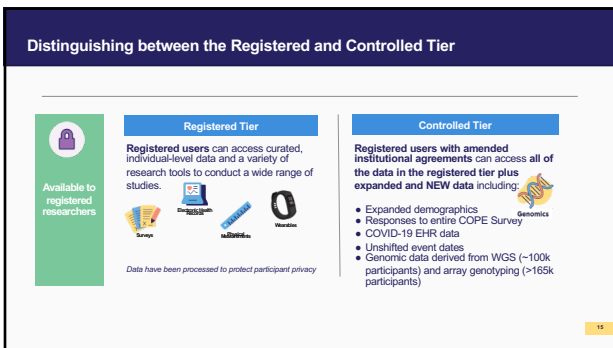
---

---

---

---

---



15

---

---

---

---

---

---

---

---

---

---



**The Research Hub**

<https://www.researchallofus.org/>

16

---

---

---

---


---

---

---

---

Researchallofus.org is home to All of Us data, research tools, & projects.



“The Public Website”

“The Workbench”

17

---

---

---

---


---

---

---

---

Data Snapshot provide an overview of participant data.



**Participants at a Glance**

**Enrollment Numbers**

591,000+ Participants

411,000+ Participants

This graph measures participants who have consented to join the program and those who have completed at least one step of the program. The color steps are sequential, opening to share electronic health records, completing the first three surveys (including physical measurements), and downloading at least one questionnaire from either of the devices.

The following numbers are representative of current participants' primary numbers are updated as of January 29, 2023.

Time Period	Participants
Jan 2015	~10,000
Jan 2016	~20,000
Jan 2017	~40,000
Jan 2018	~80,000
Jan 2019	~150,000
Jan 2020	~250,000
Jan 2021	~350,000
Jan 2022	~450,000
Jan 2023	~591,000+

18

---

---

---

---

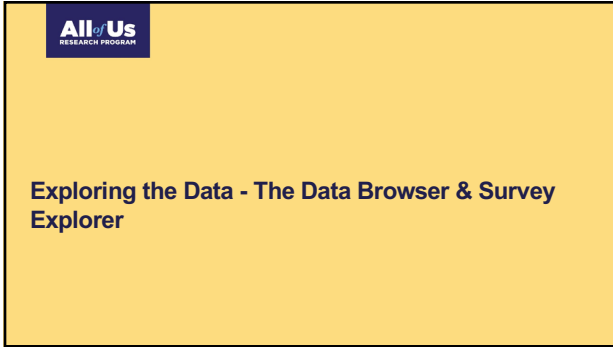
---

---

---

---





22

---

---

---

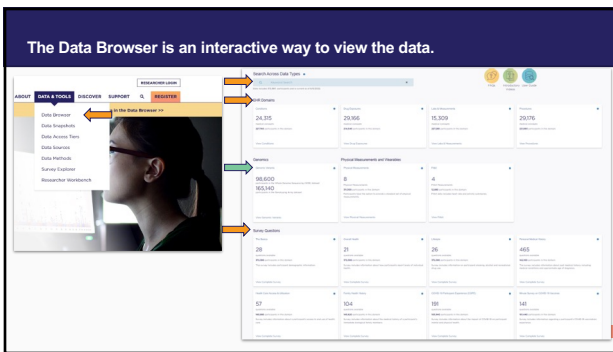
---

---

---

---

---



23

---

---

---

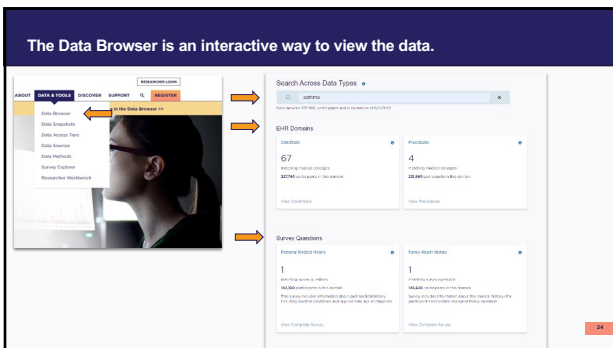
---

---

---

---

---



24

---

---

---

---

---

---

---

---



The Data Browser is an interactive way to view the data.

Condition	Participant Count	Percentage
1. Asthma	20,000	10.0%
2. Hypertension	15,000	7.5%
3. Diabetes	10,000	5.0%
4. Depression	8,000	4.0%
5. Anxiety	6,000	3.0%
6. Chronic Pain	5,000	2.5%
7. Heart Disease	4,000	2.0%
8. Cancer	3,000	1.5%
9. Stroke	2,000	1.0%
10. Alzheimer's Disease	1,000	0.5%

25

---

---

---

---

---

---

---

---

---

---

The Data Browser is an interactive way to view the data.

Medical Concept	Count	Percentage
1. Asthma	20,000	10.0%
2. Hypertension	15,000	7.5%
3. Diabetes	10,000	5.0%
4. Depression	8,000	4.0%
5. Anxiety	6,000	3.0%
6. Chronic Pain	5,000	2.5%
7. Heart Disease	4,000	2.0%
8. Cancer	3,000	1.5%
9. Stroke	2,000	1.0%
10. Alzheimer's Disease	1,000	0.5%

26

---

---

---

---

---

---

---

---

---

---

The Survey Explorer hosts all surveys available to participants.

27

---

---

---

---

---

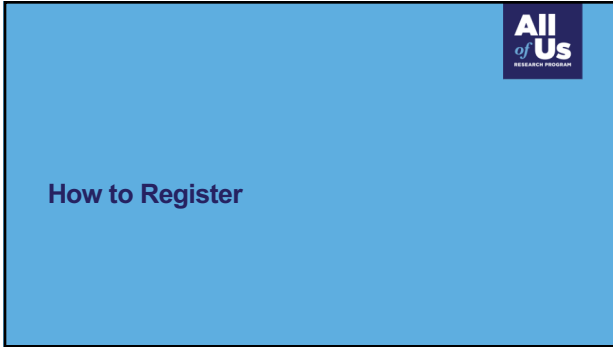
---

---

---

---

---



28

---

---

---

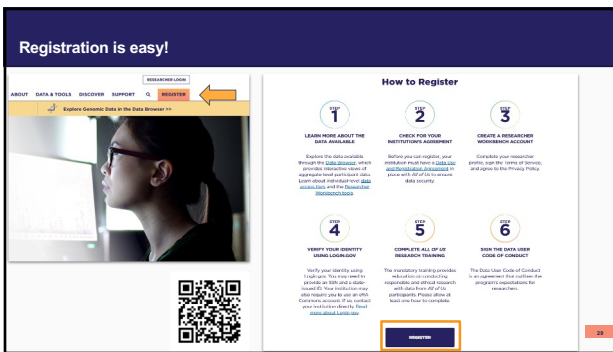
---

---

---

---

---



29

---

---

---

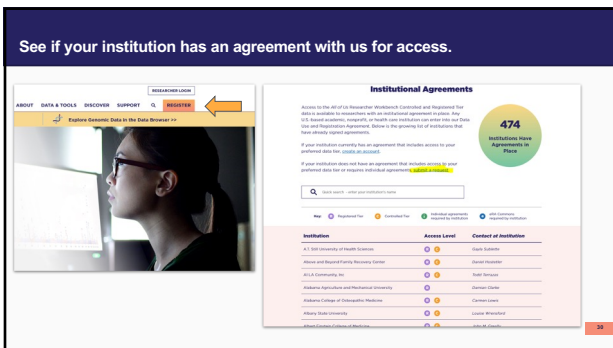
---

---

---

---

---



30

---

---

---

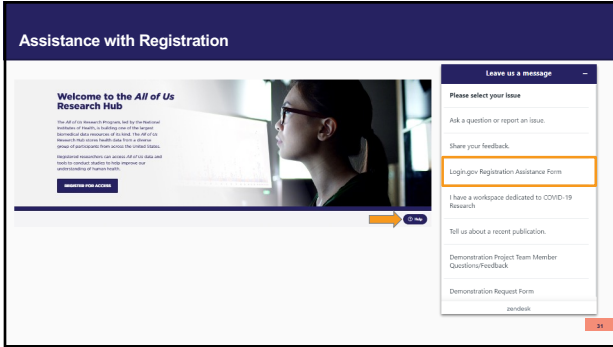
---

---

---

---

---



31

---

---

---

---

---

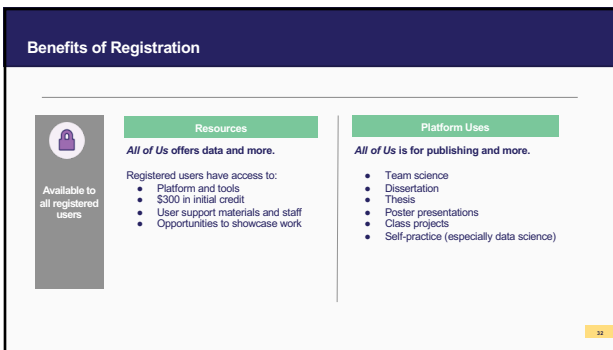
---

---

---

---

---



32

---

---

---

---

---

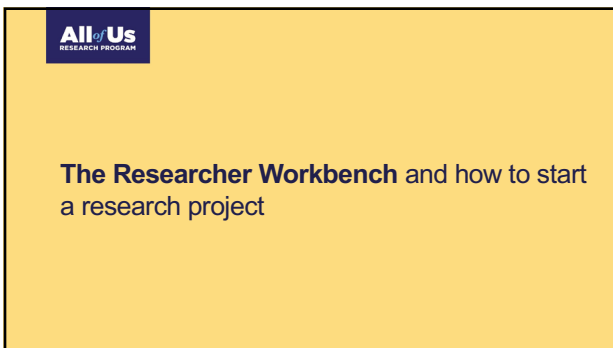
---

---

---

---

---



33

---

---

---

---

---

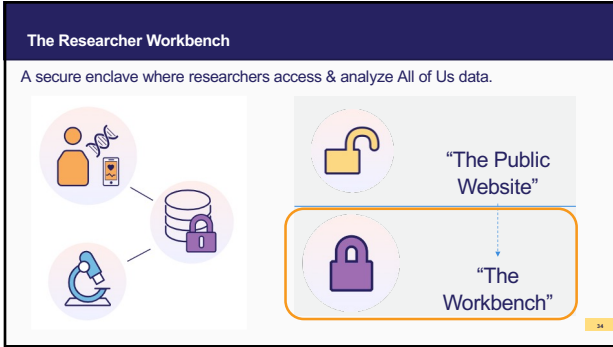
---

---

---

---

---



---

---

---

---

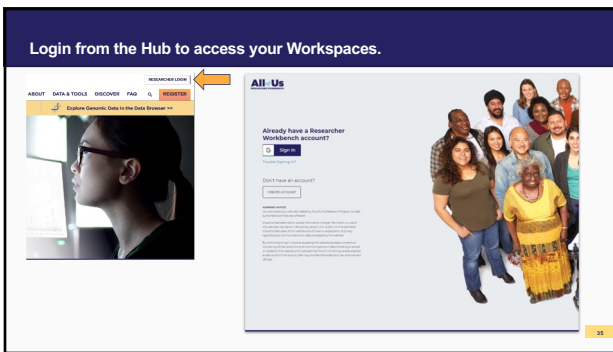
---

---

---

---

34



---

---

---

---

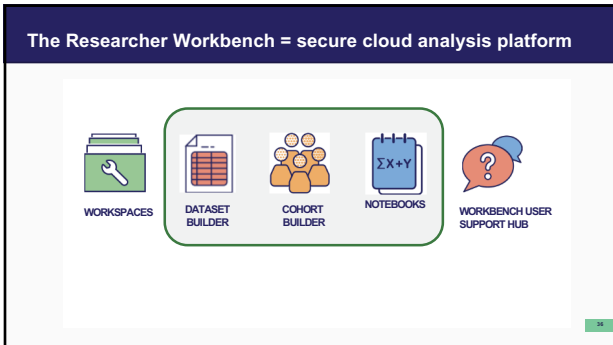
---

---

---

---

35



---

---

---

---

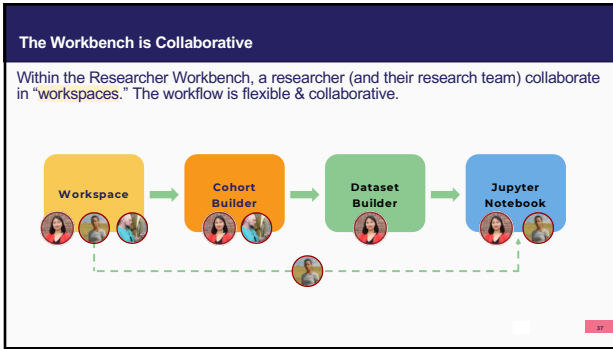
---

---

---

---

36



37

---

---

---

---

---

---

---

---

### No IRB approval needed.

We use a **passport model** and approve the researcher

38

---

---

---

---

---

---

---

---

### The Workbench landing page

Item ID	Name	Workspace Name	Last Modified	Status
1	...	...	...	...
2	...	...	...	...
3	...	...	...	...
4	...	...	...	...
5	...	...	...	...
6	...	...	...	...
7	...	...	...	...
8	...	...	...	...
9	...	...	...	...
10	...	...	...	...

39

---

---

---

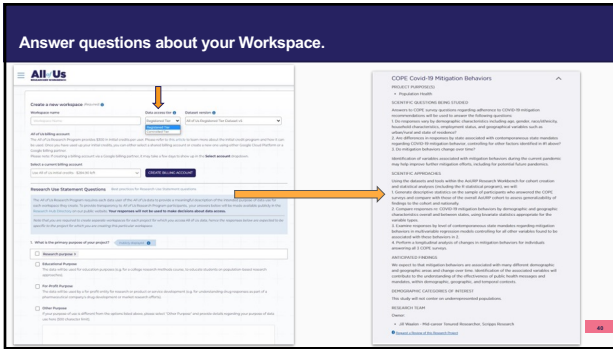
---

---

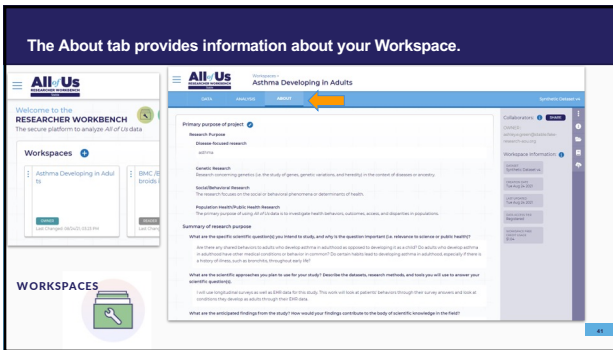
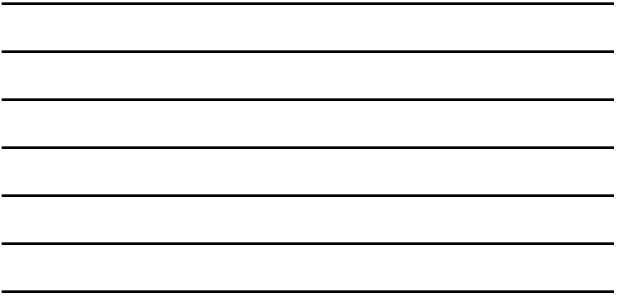
---

---

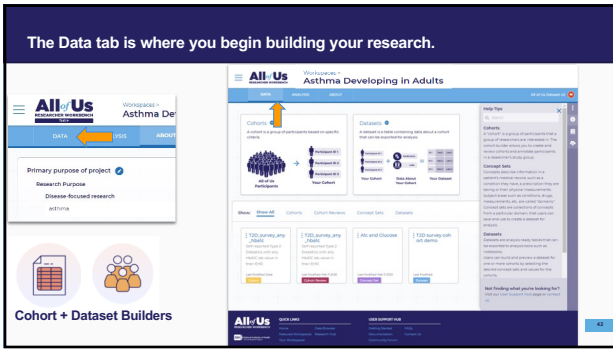
---



40

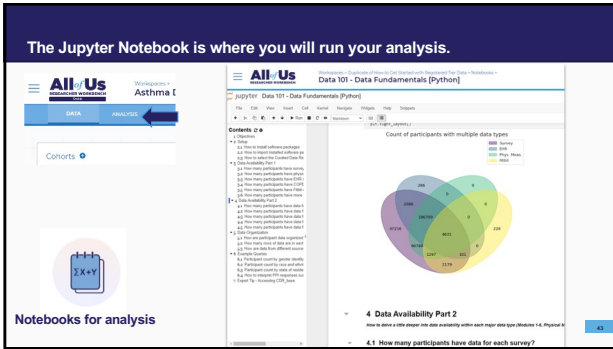


41



42





43

---

---

---

---

---

---

---

---



44

---

---

---

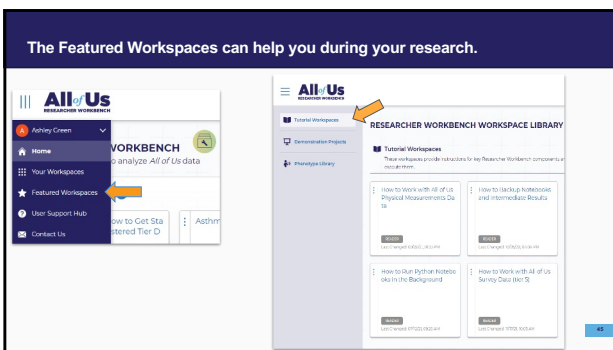
---

---

---

---

---



45

---

---

---

---

---

---

---

---

**We also provide regular office hours & webinars.**

Support Desk	New User Orientation	Office Hours
<p>Send us your questions.</p> <p>Email us or use our "Help" icon to:</p> <ul style="list-style-type: none"> <li>Resolve technical issues</li> <li>Ask questions about our data or the research program</li> <li>Give us feedback or make suggestions</li> <li>and more...</li> </ul> <p>Response in 1-2 business days.  <a href="mailto:support@researcherhelp.us">support@researcherhelp.us</a></p>	<p>Zoom in for a live orientation.</p> <p>Webinar objectives:</p> <ul style="list-style-type: none"> <li>Understand data &amp; data organization</li> <li>Learn how to get started on Researcher Workbench</li> <li>Learn how to utilize the User Support Hub</li> </ul> <p>Monthly            link emailed to all registered users</p>	<p>Get live, virtual help with questions.</p> <p>Ask your questions live:</p> <ul style="list-style-type: none"> <li>Workflow implementation questions</li> <li>Data refreshers and updates</li> <li>Billing questions</li> <li>and more...</li> </ul> <p>Weekly (Tues) &amp; Bi-Weekly (Fri)            link emailed to all registered users</p>

46

---

---

---

---

---

---

---

---

---

---

**The Support Hub and Team are here to help you!**

<https://aousupporthelp.zendesk.com/hc/en-us>

47

---

---

---

---

---

---

---

---

---

---

**Stay in touch to learn more**

Sign up for our bimonthly newsletter

Subscribe to **Research Roundup**

Stay up-to-date on the latest news and insights from the *All of Us* Research Hub through our bimonthly email newsletter.

[aou.us.org/RRSsignup](https://aou.us.org/RRSsignup)

48

---

---

---

---

---

---

---

---

---

---



Join our community of researchers!

Sign up for our newsletter! [allofus.org/RSsignup](mailto:allofus.org/RSsignup)



Spread the word about All of Us! Visit our social media platforms!



@AllOfUsResearch  
#JoinAllOfUs

Support@ResearchAllOfUs.org

---

---

---

---

---

---

---

49