



Update from NCCPA: Pulling Back the Curtain



Greg P. Thomas, PA-C Emeritus, MPH
Director of PA Relations
NCCPA

Faculty Disclosures

- **Contractor with NCCPA**
- **No other financial relationships to disclose**

Presentation Outline

- **About NCCPA**
- **Summary of the Pilot Alternative to PANRE**
- **Certificates of Added Qualifications (CAQ)**
- **Disciplinary Policy and Role of NCCPA**
- **Staying Informed**

The NCCPA is . . .

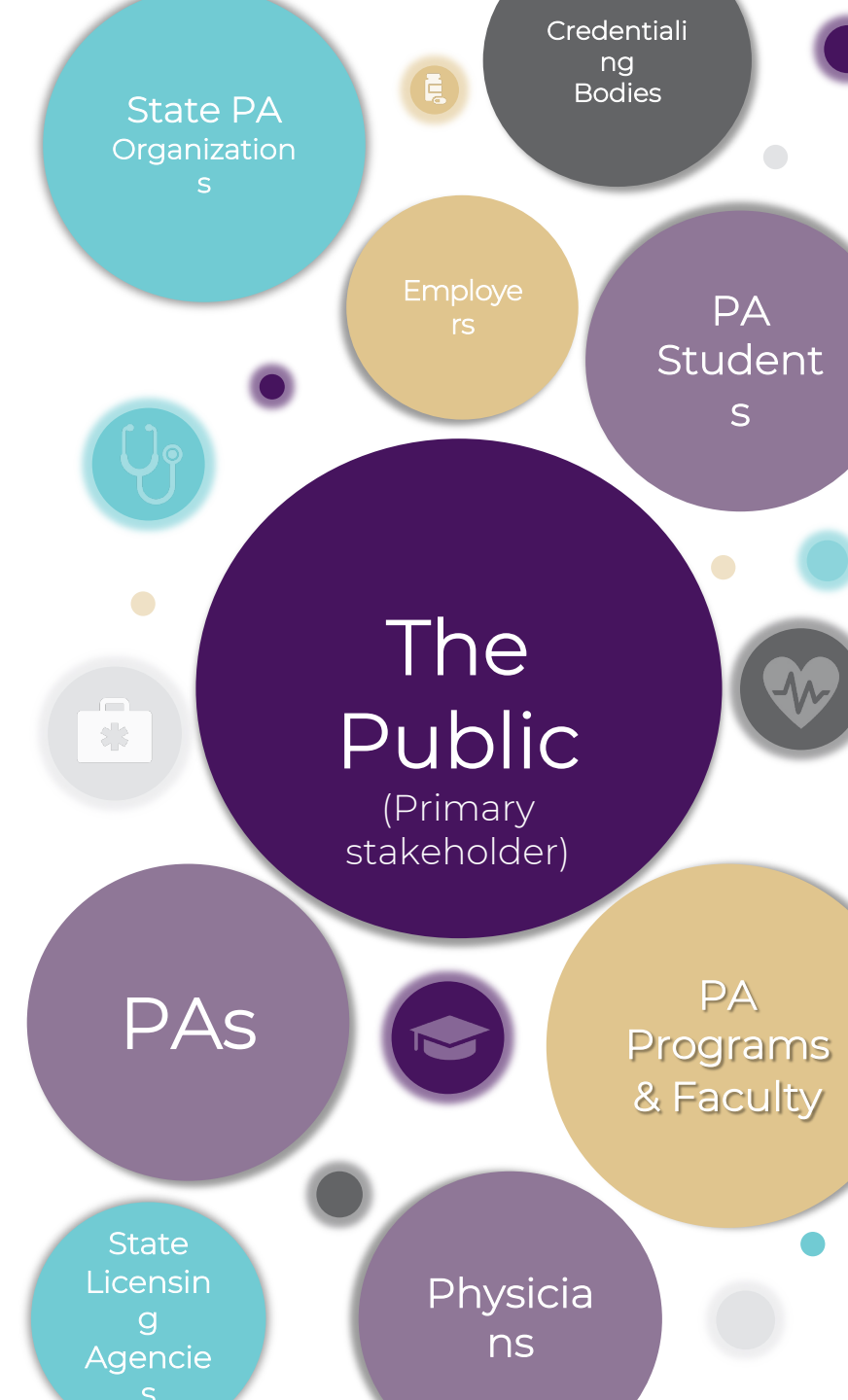
- The only national certifying body for PAs and has been since its inception in 1975
- Accredited by the National Commission for Certifying Agencies (NCCA)
- Continually exploring strategies to most effectively provide a relevant and meaningful recertification process
- Committed to finding ways to minimize the burden of certification maintenance



NCCPA
Certification. Excellence.

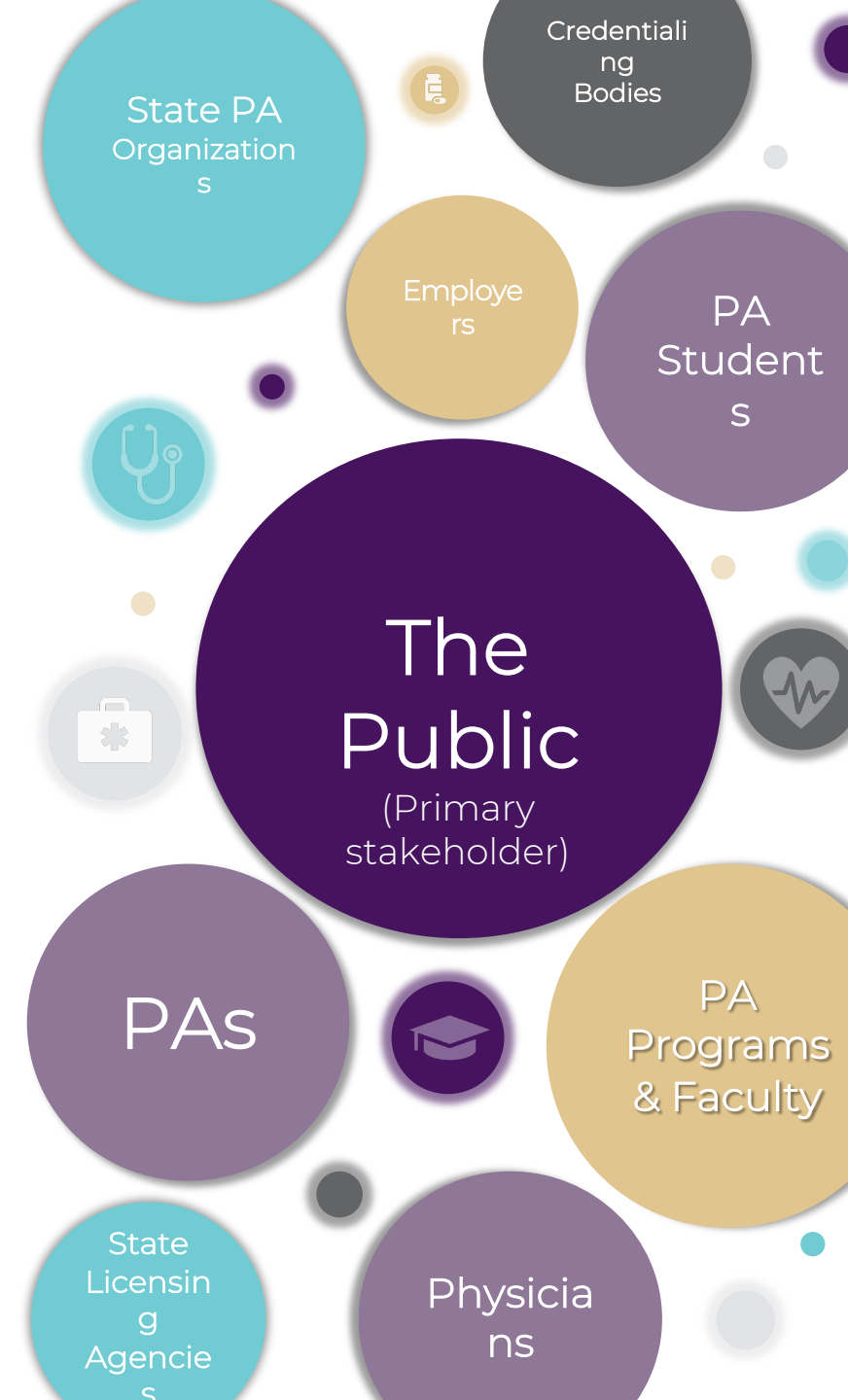
NCCPA Guiding Principles

- NCCPA is dedicated to serving the interest of the public
 - We do so with a passionate belief that certified PAs are essential members of the health care delivery team who provide millions access to more affordable, high quality health care
- We remain committed to the flexibility that PAs have to change specialties during their career and to work in multiple specialties



NCCPA - More than just building exams

- Rely on PA practice data to inform our certification programs
- Publish statistical reports to inform employers, policy makers, the media, patients and others
- Promote qualifications and roles of Certified PAs to various audiences (physicians, employers, state medical boards, public, etc.)
- Explain the rigor and strength of the certification process to many of those same audiences



NCCPA Research



The screenshot shows the NCCPA Research website. The navigation menu includes: Coronavirus (COVID-19) Resources, Verify PA Certification, NCCPA Research, FAQ, Policies & Procedures, Exceptions to Policy and Exam Grievances, Submitting a Complaint Against a PA-C Designee, Forms, State Licensing Boards, NCCPA Podcasts, and Marketing Outreach. The main content area displays the following reports:

- 2019 Statistical Profile of Certified Physician Assistants
- 2018 Statistical Profile of Certified Physician Assistants by State
- 2018 Statistical Profile of Recently Certified Physician Assistants
- 2018 Statistical Profile of Certified Physician Assistants by Specialty
- 2018 Statistical Profile of Certified Physician Assistants
- 2017 Statistical Profile of Certified Physician Assistants by State
- 2017 Statistical Profile of Recently Certified Physician Assistants
- 2017 Statistical Profile of Certified Physician Assistants by Specialty
- 2017 Statistical Profile of Certified Physician Assistants

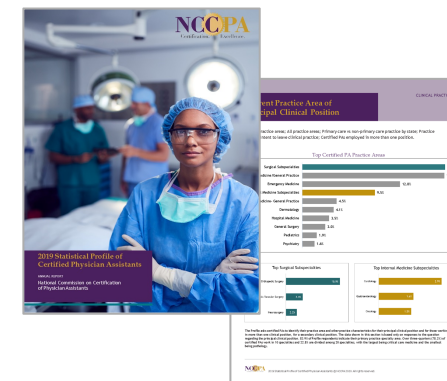


2019 Statistical Report of Recently Certified PAs

- Gender, Age, Race and Ethnicity
- Assessment of Job Opportunities
- Plans to Seek Additional Education or Training
- Educational Debt
- Practice Environment and Work Life Balance
- Job Search

2019 Statistical Profile of Certified PAs

- Geographic Distribution
- Gender, Age, Race and Ethnicity
- Education (Highest Level Reached)
- Top PA Practice Areas (Principal Clinical Position)
- Practice Setting



You Can't Spell NCCPA Without PA



PAs are involved in many important aspects of the NCCPA, and we are passionate about the people of the PA profession.

1 **Non-Voting Member**
NCCPA President/CEO (also a PA-C)

2 **Public Members**

5 **Physician Members**
Comprised of: 1 MD nominee from AMA; 1 DO nominee from AOA; 3 Physician Directors-at-Large

10 **PA Members**
Comprised of: 1 PA nominee from AAPA; 1 PA nominee from PAEA; 1 PA nominee from FSMB; 7 PA Directors-at-Large

Our Board of Directors

17 Voting Members



2019 PA Volunteer Involvement in the Exam Development Process

- **178 PAs served on exam related committees** performing related tasks for the PANCE, PANRE and the CAQ exams
- NCCPA hosted **33 meetings (all staffed with PAs)** to develop and validate exam questions, review exam forms, set passing standards, and explore advancements to the question generation process

Item
Development

Form
Review

Standard
Setting

Key Validation



Benefits To Volunteering – volunteer@NCCPA.net



Expenses for travel/hotel accommodations covered

Experience that can be included on a CV, and enhanced personal and professional development



Volunteers play an important role – contributing to quality of the exams administered by NCCPA



Honoraria (\$\$\$) issued after attendance at each meeting

Presentation Outline

- **About NCCPA**
- **Summary of the Pilot Alternative to PANRE**
- **Certificates of Added Qualifications (CAQ)**
- **Disciplinary Policy and Role of NCCPA**
- **Staying Informed**

Pilot Design

- Longitudinal assessment of core medical knowledge (assessing for learning)
- During each quarter, questions could be answered over time, from any device, anywhere
- Over 18,500 PAs signed up for pilot (almost 60% of those eligible)

2019	Jan - Mar 25 questions	Apr - Jun 25 questions	Jul - Sep 25 questions	Oct - Dec 25 questions	2 Years, 200 Questions
2020	Jan - Mar 25 questions	Apr - Jun 25 questions	Jul - Sep 25 questions	Oct - Dec 25 questions	

Pilot Design

- Time allotment for each question allowed for use of references if desired
- Immediate feedback after answering question with explanations and resources provided
- Some targeted questions allowed for remediation

Summary of Pilot Findings

- 18,099 PAs completed the process (97.7% of those who signed up)
- 97.5% of PAs successfully passed the Pilot
- Pilot participants were very representative of the overall PA population by geography and specialty of practice
- >100 PAs participated in question writing, developing rationales, standard setting, etc

Summary of Pilot Findings

- Although participants were given 10-11 weeks to complete each set of 25 questions, 78.3% of PAs completed all questions within one day each quarter
- 90.9% of PAs indicated that topics covered in the questions were a fair representation of “core medical knowledge”
- 93.1% of PAs read the explanation for questions they answered incorrectly
- 85.3% of PAs indicated that targeted questions were beneficial for “learning”
- Very few PAs reported that the pandemic affected their ability to complete the Pilot (5.9%)

What's the Future of This Alternative to PANRE

- Next large bolus of PAs taking PANRE will be 2024 (early administration in 2023)
- Time to review and analyze the results very carefully
- BOD likely to decide final PANRE alternative by early 2022

Presentation Outline

- **About NCCPA**
- **Summary of the Pilot Alternative to PANRE**
- **Certificates of Added Qualifications (CAQ)**
- **Disciplinary Policy and Role of NCCPA**
- **Staying Informed**

Key Principles Of The CAQ Program

- NCCPA (and many stakeholders) agree that the PA-C must maintain its position as the *primary credential for all PAs*.
- NCCPA has remained committed to developing a voluntary specialty program.
 - A CAQ is not required to maintain NCCPA certification, and we require licensure as a condition of earning a CAQ so that it can not become a requirement for licensure
- The program has been developed to be *as inclusive as possible*, recognizing the individual differences among and within specialties.

Which Specialties ?

- Cardiovascular & Thoracic Surgery
- Emergency Medicine
- Hospital Medicine
- Nephrology
- **Orthopaedic Surgery**
- Pediatrics
- Psychiatry



CAQ Components

- Prerequisites
 - Unrestricted license from state(s)
 - Current PA-C
- Specialty-related CME (not in addition to certification maintenance CME requirement)
- Experience
- Attestation re specific procedures and/or cases
- Specialty CAQ exam

Orthopaedic Surgery CAQ CME Requirements

- In the 6 years leading up to applying for the CAQ exam, earn 75 Category 1 CME credits focused on orthopaedic surgery including ...
 - 25 earned within the two years prior to date of exam application
- You decide whether a topic is related to orthopaedic surgery practice, but the CME credits claimed may be subject to audit
- The same 75 credits may also be used for maintenance of the PA-C credential

Orthopaedic Surgery CAQ Experience Requirement

- 4,000 hours of experience (the equivalent of 24 months of full-time practice) working as PA in orthopaedic surgery within six years of attesting to NCCPA that you've met this requirement
- No documentation required unless you're selected for an audit

Orthopaedic Surgery CAQ Procedures / Skills Requirements

- The attestation must indicate that the PA *has performed* the procedures and patient management relevant to the practice setting and/or *understand* how and when the procedures *should* be performed.
- You may not have experience with each procedure, but must be knowledgeable of the basics to include in which situations the procedures should be done and the associated management of patients.
- The attestation must be signed by a physician, lead/senior PA, or physician/PA post graduate program director who works in the specialty and is familiar with the PA's practice and experience.

List of procedures that should be considered are provided at:
Specialty Certificates – NCCPA

Orthopaedic Surgery CAQ Exams

- 120 questions targeted to certified PAs working in the specialty
- 2-hour exam
- Specialty exams are administered annually nationwide during two time windows at Pearson VUE testing centers (remaining opportunity in 2021 is October 4-9)
- Cost \$250 plus a \$100 administrative fee paid when you start the CAQ process

CAQ Numbers (2011 – 2020)

Total = 2,137

- 1,074 in emergency medicine
- 493 in psychiatry
- **228 in orthopaedic surgery**
- 176 in hospital medicine
- 71 in pediatrics
- 63 in CVT surgery
- 32 in nephrology

Future of CAQ

Coming soon:

- Dermatology
- Palliative Medicine and Hospice Care

Presentation Outline

- **About NCCPA**
- **Summary of the Pilot Alternative to PANRE**
- **Certificates of Added Qualifications (CAQ)**
- **Disciplinary Policy and Role of NCCPA**
- **Staying Informed**

Licensure And Certification

Licensure:

Process by which a governmental authority grants permission to an individual practitioner or health care organization to operate or to engage in an occupation or profession.

Licensure regulations are generally established to ensure that an organization or individual meets minimum standards to protect the interest of the public.

Certification:

Typically a voluntary process, provided by a private organization for the purpose of providing the public protection on those individuals who have successfully met all requirements for the credential and demonstrated their ability to perform their profession competently.

Represents the achievement of a level of professional competency agreed by the international community as qualified to practice effectively.

Review and Appeals Process

Considers cases involving:

- Requests for exceptions to policy (ETP) which are extensions of certification for additional time to earn/log CME and/or take and pass an exam due to (requires documentation):
 - military obligation
 - death in the family
 - personal or family medical issues
 - other significant and severe extenuating circumstances
- Disciplinary actions
- Complaints

Disciplinary Policy & Code Of Conduct

- **Outlines principles that all certified or certifying PAs are expected to uphold**
- **Requires that certified or certifying PAs shall:**
 - **Protect the integrity of the certification & recertification process**
 - **Comply with laws, regulations & standards governing professional practice**



Disciplinary Case Origination

- **Self-reports from PAs during exam application and/or certification maintenance process; answering in the affirmative to questions on:**
 - **Adverse licensure actions**
 - **Misdemeanors and felonies**
 - **Adjudication of mental incompetence**
- **Reports on state board actions provided by the FSMB, individual State Medical Boards (SMB) and/or federal entities**
- **Individual complaints – these generally occur for irregular behavior (cheating/fraudulent credentials)**

Disciplinary Review Process

- Staff gathers appropriate documentation (e.g. medical board proceedings, licensure status)
- If there is potential for disciplinary sanction, the PA is sent a Notice of Disciplinary Proceeding requesting a written response
- Staff reviews that response and other documentation and issues a Letter of Recommended Decision to the PA regarding the sanction and the appeals process

Disciplinary Review Process

- **Review Committee** – a committee of the NCCPA Board of Directors considers appeals arising from disciplinary decisions
 - Majority are PAs; includes one or more physicians and a public representative
- The Review Committee may affirm or modify the staff's recommended decision
- Generally, Review Committee decisions are final
 - A second level of appeal to the Board is only allowed if a procedural violation occurred or if the initial decision appears to have been “arbitrary or capricious”

Potential Disciplinary Sanctions

- **No Action**
- **Not Reportable**
 - Letter of Concern – communiqué between NCCPA and the PA; not reported to anyone else
- **Reportable – to interested parties**
(licensing boards, federal entities, employers)
 - Letter of Censure
 - Revocation of Certification
 - Revocation of Eligibility

Presentation Outline

- **About NCCPA**
- **Summary of the Pilot Alternative to PANRE**
- **Certificates of Added Qualifications (CAQ)**
- **Disciplinary Policy and Role of NCCPA**
- **Staying Informed**

Connecting with Employers

- Search hundreds of jobs for Certified PAs
- Upload your résumé
- Set up alerts for new jobs

PA-C Career Center

NCCPA
Certification. Excellence.

Powered by Health eCareers

JOB TITLE, SKILLS, KEYWORD, COMPANY LOCATION FIND JOBS

716 PHYSICIAN ASSISTANT JOBS | NATIONAL COMMISSION ON CERTIFICATION OF PHYSICIAN ASSISTANTS

Sort results: BEST MATCH DATE JOB TITLE EMPLOYER

UPDATE RESULTS

Job Category -
Physician Assistant (716) >
Location +
Date Posted +
Visa Waiver +

Physician Assistant Today
Nevada Orthopedic & Spine Center is celebrating twenty years of orthopedic excellence by providing quality comprehensive orthopedic care and setting the standard in Southern Nevada.
[NEVADA ORTHOPEDIC & SPINE CENTER](#)
Las Vegas, Nevada
Orthopaedic - PA

PA / Primary Care / Occupational Health Today
A Physician Assistant is needed for a full scope family practice opportunity in Salinas, CA.
[Advanced Practice Solutions, LLC](#)
Salinas, California
Occupational Medicine - PA

Physician Assistant - Internal Medicine Today
Ind.PA Spectrum Healthcare Resources has an opportunity for a civilian Physician Assistant-IM at Bremerton Naval Hospital in Bremerton, Washington
[Spectrum Healthcare Resources](#)
Bremerton, Washington
Internal Medicine - PA

Physician Assistant - Family Medicine Today
Spectrum Primary Care has an opportunity for a civilian Family Medicine Physician Assistant at the Veteran's Affairs Outpatient Clinic (CBOC) in Alamogordo, New Mexico.
[Spectrum Healthcare Resources](#)
Alamogordo, New Mexico
Family Medicine - PA

Family Practice Physician Assistant Today

Click "Career Center" Link at
www.nccpa.net

NCCPA ON SOCIAL MEDIA



Facebook - @NCCPAcert

YouTube – NCCPA

Twitter - @NCCPAcert

LinkedIn – National Commission on
Certification of Physician Assistants

Instagram – nccpa_cert

Alexa PA Skill & Podcasts Too



PA FACTS ALEXA SKILL

TO ENABLE THE SKILL:

- Say “Alexa, enable physician assistant facts”
- Type a search in the Alexa store for “Physician Assistant (PA) Facts”

TO HEAR FACTS ONCE SKILL IS ENABLED:

- Say “Alexa, open PA facts”



There's an App for That!

- Keep track of your certification status
- Log CME as you earn it
- Update personal data and professional profile

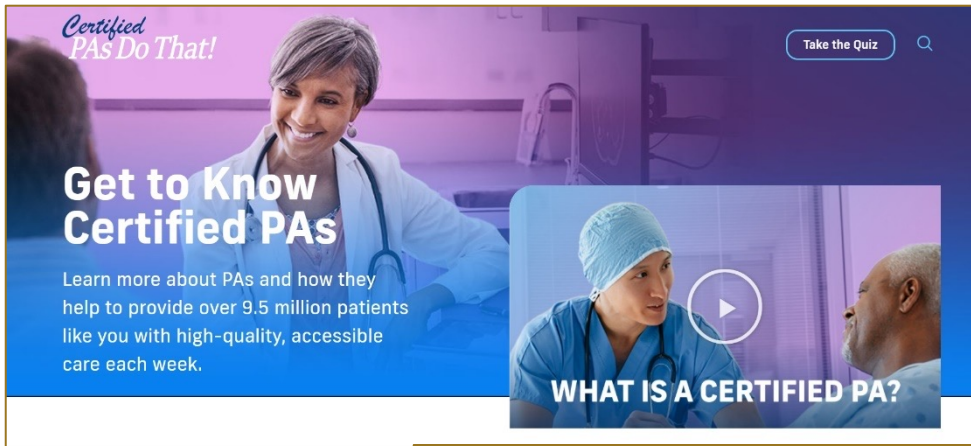


Certified PAs Do That!

Take the Quiz

Get to Know Certified PAs

Learn more about PAs and how they help to provide over 9.5 million patients like you with high-quality, accessible care each week.



WHAT IS A CERTIFIED PA?

How do I know that I will receive high-quality care from a Certified PA?

Ongoing Certification Maintenance



Certified PAs are required to complete **100 hours of continuing medical education (CME)** every two years.

Certified PAs participate in the **Physician Assistant National Recertifying Examination (PANRE)**, a periodic

Certified PAs Do That!

Take the Quiz

Did you know?

Certified PAs diagnose, treat, and manage acute and chronic illnesses.	Collaborate Certified PAs practice medicine collaboratively with physicians on health care teams.
Military Roots The PA profession has military roots. The original three PAs who graduated from the first PA program were ex-Navy corpsmen.	2,000 Hours Certified PAs complete more than 2,000 hours of clinical rotations in PA school.



Education

Certified PAs are educated at the master's degree level. Before entering PA school, PAs complete a bachelor's degree program, and most are required to have prior health care experience with hands-on patient care. PA programs are typically **27 months**, and PA students must complete at least **2,000 hours** structured clinical education before they graduate.

License to practice

In order to obtain their license to practice medicine, Certified PAs must graduate from an accredited PA program and pass the **Physician Assistant National Certifying Examination (PANCE)**. Once they have completed these requirements they can apply for a license with their state's medical board.

State licensure laws authorize PAs to practice medicine either pursuant to a supervision agreement with a physician or in collaboration with a physician.



QUESTIONS FOR NCCPA?



Call: 678-417-8100

Information Service Representatives
available to answer your questions
Mon - Fri, 8:30 a.m. - 5:00 p.m. (EST)

Text: 678-417-8101

Email: nccpa@nccpa.net

Explore our website at:
www.NCCPA.net

Check out and share the
newly re-designed
www.PAsDoThat.net



Thank You!

Any questions: gregt@nccpa.net